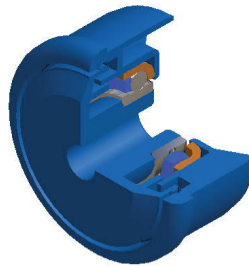
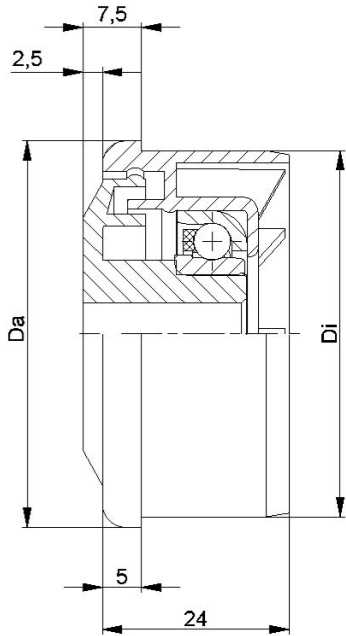


**Kunststofftragrollenlager KTR/KTE bis 150 daN**



**KTR/KTE**

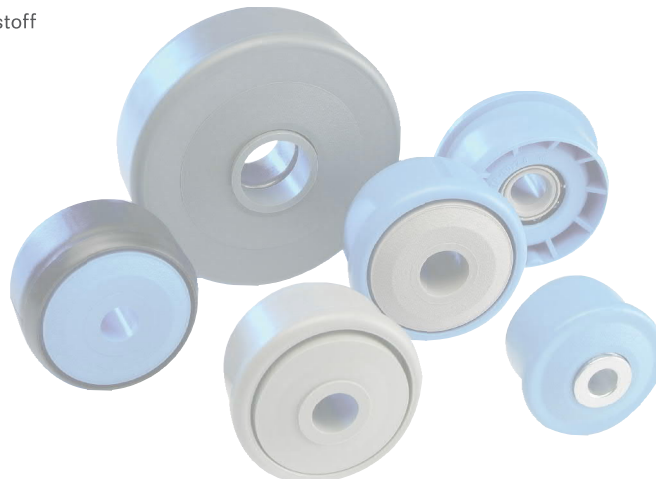


KTR-30			
Typ	Di +0,2	Da	Tragzahl C [daN]
KTR-50x1,5.30	47,3	49,9	80
KTR-50x2,8.30	44,6	49,9	80
KTR-60x1,5.30	57,3	59,9	80

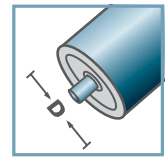
Weitere Varianten auf Anfrage!

- ☛ Radkörper: Kunststoff
- ☛ Einfachlabyrinth: Kunststoff
- ☛ Kugellager RL-30
  - ☛ Lagerschale: Stahl, gehärtet
  - ☛ Innenring: Stahl, gehärtet
  - ☛ Kugelkäfig: Kunststoff
  - ☛ Kugel: Stahl

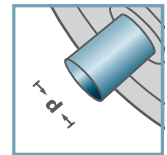
Achtung: bei Achse 15 mm ist das Einfachlabyrinth lose beigelegt und muss bei der Montage gesichert werden!



KTR-30



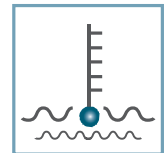
D [mm]  
50 - 60



d [mm]  
10; 12; 15; SW11



C [daN]  
80



T [°C]  
0° - 80°

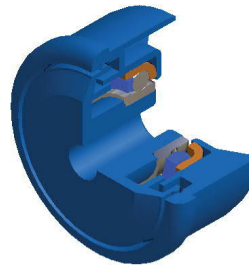
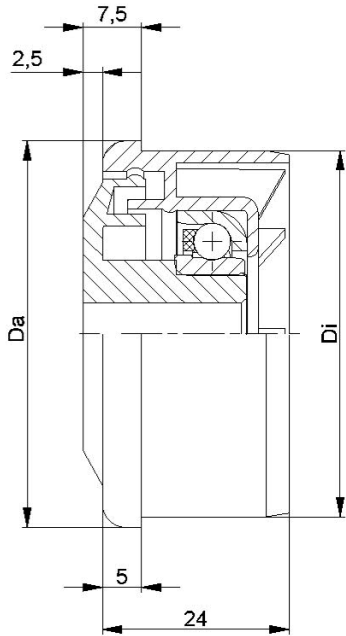


Öl



Karton [Stck.]

ø50: 250  
ø60: 200

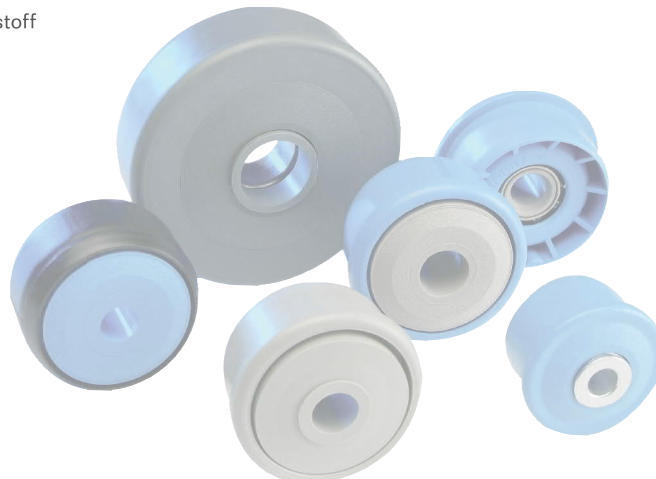


KTR-31			
Typ	Di +0,2	Da	Tragzahl C [daN]
KTR-50x1,5.31	47,3	49,9	25
KTR-50x2,8.31	44,6	49,9	25
KTR-60x1,5.31	57,3	59,9	25

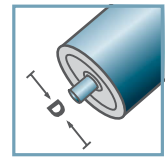
Weitere Varianten auf Anfrage!

- ☛ Radkörper: Kunststoff
- ☛ Einfachlabyrinth: Kunststoff
- ☛ Kugellager RL-31
  - ☛ Lagerschale: 1.4301
  - ☛ Innenring: 1.4305
  - ☛ Kugelkäfig: Kunststoff
  - ☛ Kugel: 1.4301

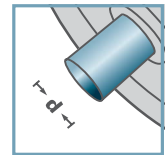
Achtung: bei Achse 15 mm ist das Einfachlabyrinth lose beigelegt und muss bei der Montage gesichert werden!



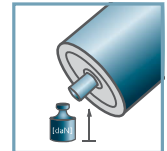
KTR-31



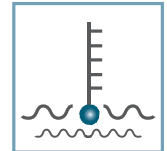
D [mm]  
50 - 60



d [mm]  
10; 12; 15; SW11



C [daN]  
25



T [°C]  
0° - 80°

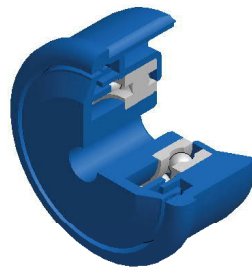
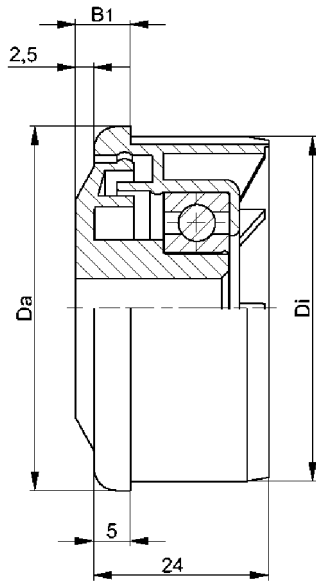


Öl



Karton [Stck.]

ø50: 250  
ø60: 200

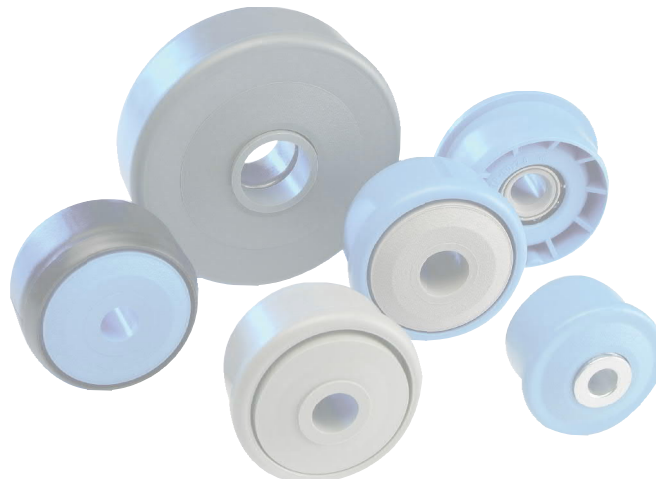


KTR-40				
Typ	Di +0,25	Da	B1	Tragzahl C [daN]
KTR-50x1,5.40	47,3	49,9	7,5	80
KTR-50x2,0.40	46,3	49,9	7,5	80
KTR-50x2,8.40	44,6	49,9	7,5	80
KTR-60x1,5.40	57,3	59,9	7,5	80
KTR-60x2,0.40	56,3	59,9	7,5	80

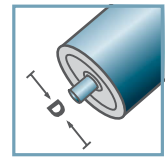
Weitere Varianten auf Anfrage!

- ☛ Radkörper: Kunststoff
- ☛ Einfachlabyrinth: Kunststoff
- ☛ Kugellager 6202

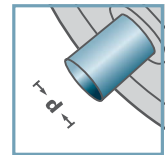
Achtung: bei Achse 15 mm ist das Einfachlabyrinth lose beigelegt und muss bei der Montage gesichert werden!



KTR-40



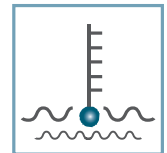
D [mm]  
50 - 60



d [mm]  
10; 12; 15; SW11



C [daN]  
80



T [°C]  
0° - 80°

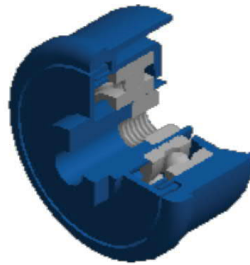
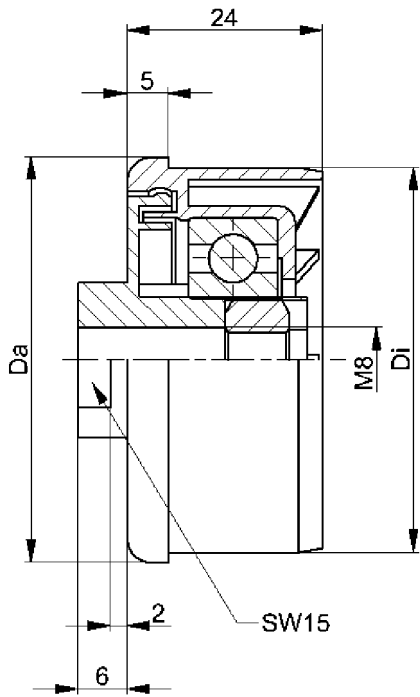


EP 2



Karton [Stck.]

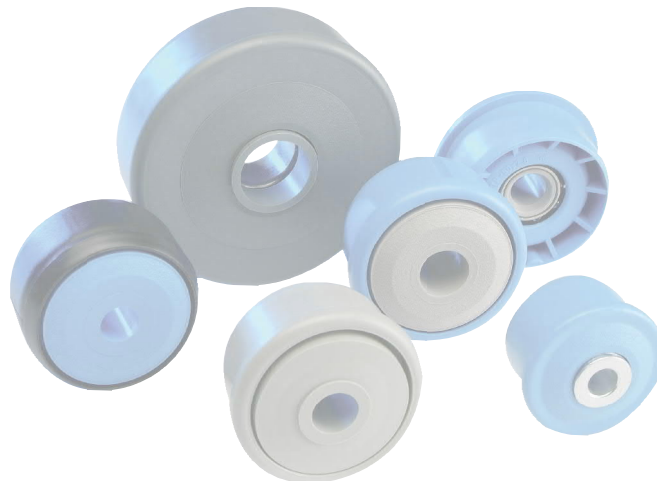
ø40: -  
ø50: 250  
ø60: 200



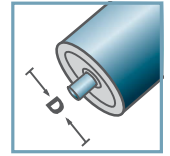
KTR-40.M8			
Typ	Di +0,2	Da	Tragzahl C [daN]
KTR-50x1,5.40	47,3	49,9	80

Weitere Varianten auf Anfrage!

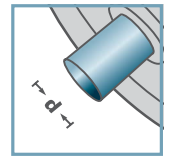
- Radkörper: Kunststoff
- Einfachlabyrinth: Kunststoff
- Kugellager 6202
- Sechskantmutter



KTR-40.M8



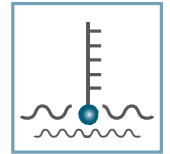
D [mm]  
50



d [mm]  
M8



C [daN]  
80



T [°C]  
0° - 80°

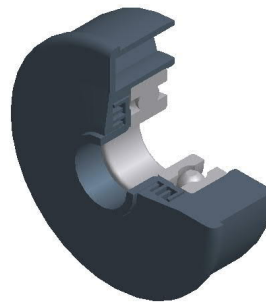
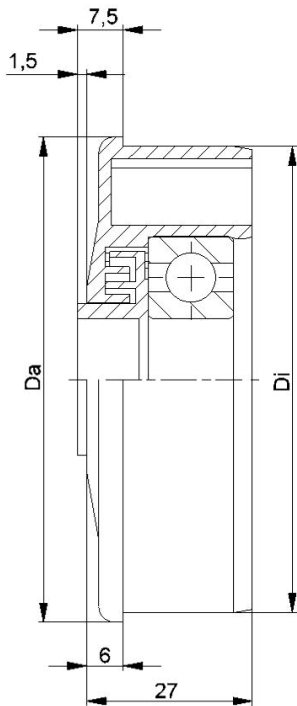


EP 2



Karton [Stck.]

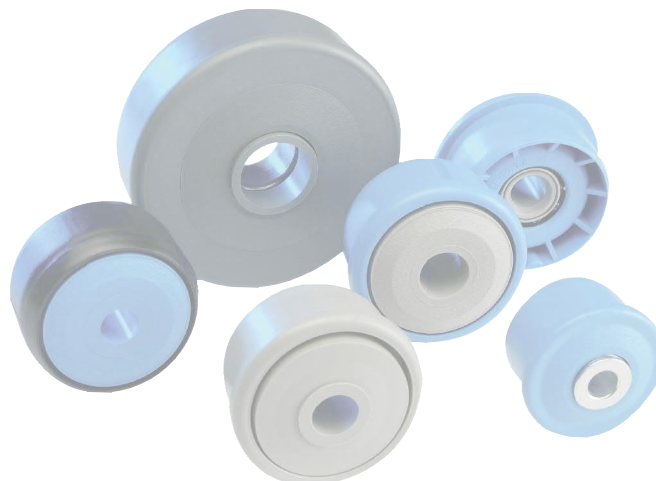
ø50: 250



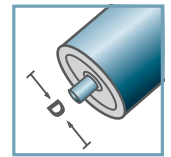
KTR-43/44			
Typ	Di +0,2	Da	Tragzahl C [daN]
KTR-63,5x2,9.43/.44	58,0	63,4	150
KTR-80x2,0.43/.44	76,4	79,9	150

Weitere Varianten auf Anfrage!

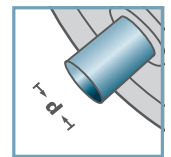
- Radkörper: Kunststoff
- Mehrfachlabyrinth: Kunststoff
- Kugellager 6303/6204



KTR-43/44



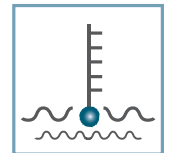
D [mm]  
63,5 - 80



d [mm]  
6303: 17  
6204: 20



C [daN]  
150



T [°C]  
0° - 80°



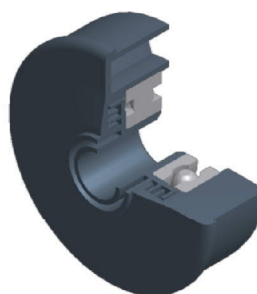
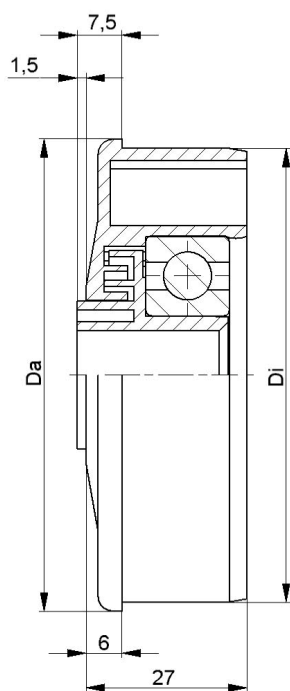
EP 2



Karton [Stck.]

100

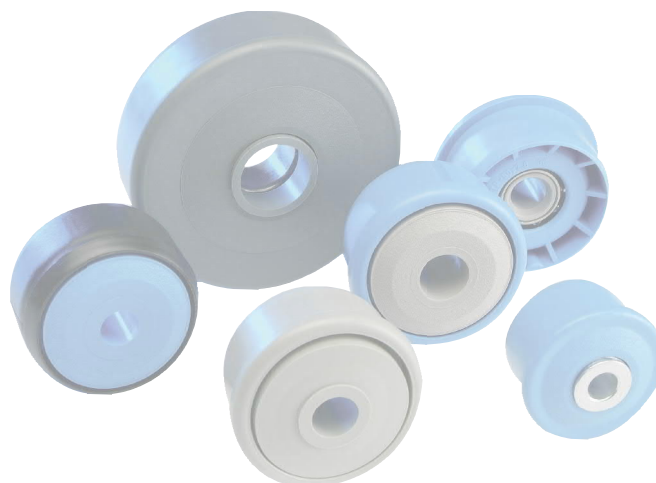
KTR



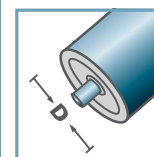
KTR-43/44			
Typ	Di +0,2	Da	Tragzahl C [daN]
KTR-63,5x2,9.43/.44	58,0	63,4	150
KTR-80x2,0.43/.44	76,4	79,9	150

Weitere Varianten auf Anfrage!

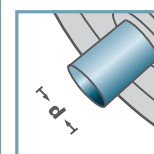
- Radkörper: Kunststoff
- Mehrfachlabyrinth: Kunststoff
- Kugellager 6303/6204



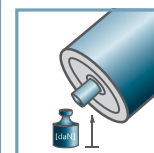
KTR-43/44



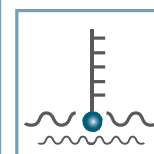
D [mm]  
63,5 - 80



d [mm]  
6303: 12  
6204: 15



C [daN]  
150



T [°C]  
0° - 80°



EP 2



Karton [Stck.]

100