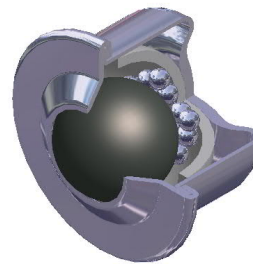
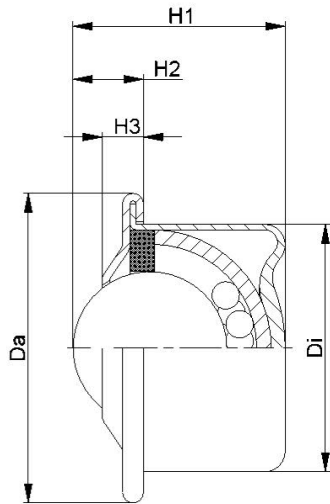


**Weitere Produkte/Zubehör**



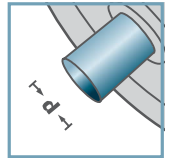
**WEITERE PRODUKTE**



KRO						
Typ	Da	Di	H1	H2	H3	Tragzahl C [daN]
KRO-015L	31,0	24,0	21,0	9,5	5,5	50
KRO-022L	45,0	36,0	30,5	10,0	6,0	120
KRO-015	31,0	24,0	21,0	9,5	5,5	120
KRO-022	45,0	36,0	30,5	10,0	6,0	350



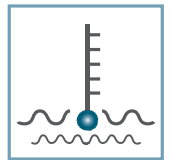
KRO-



d [mm]  
-



C [daN]  
50 - 120



T [°C]  
-30° - 100°



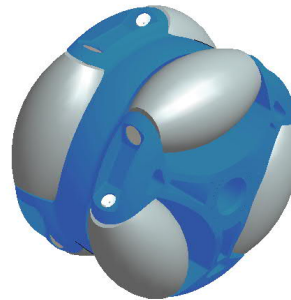
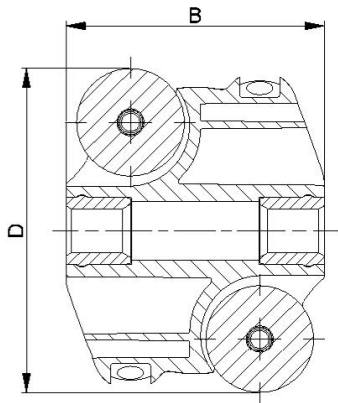
-



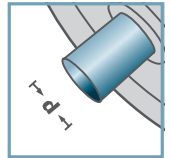
Karton [Stck.]

015L: 400  
022L: 100

# Kugelrollen



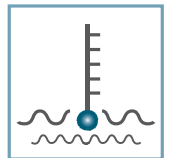
ASR-



d [mm]  
8; 10; SW9



C [daN]  
10 - 20



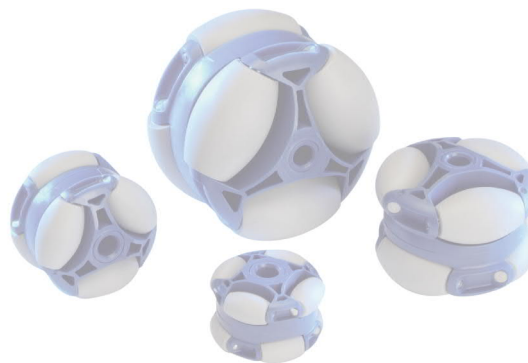
T [°C]  
0° - 80°



ASR-			
Typ	D	B	Tragzahl C [daN]
ASR-40	40	29	10
ASR-48	48	39	15
ASR-60	60	48	20

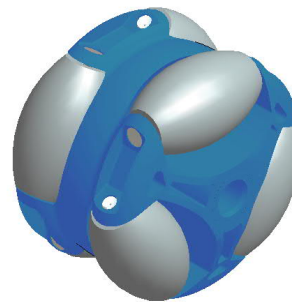
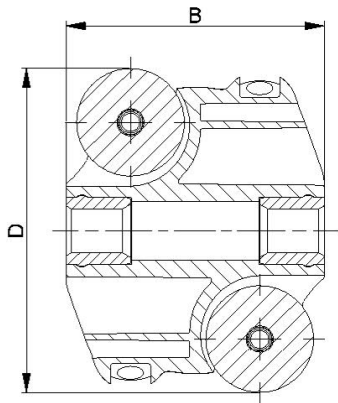
Weitere Varianten auf Anfrage!

- ☛ Radkörper: Kunststoff
- ☛ Tonnenrolle: Kunststoff
- ☛ Achse: 1.4301

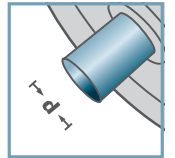


Karton [Stck.]

# Allseitenrollen



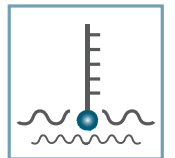
ASR-



d [mm]  
8; 12;15; SW14



C [daN]  
40



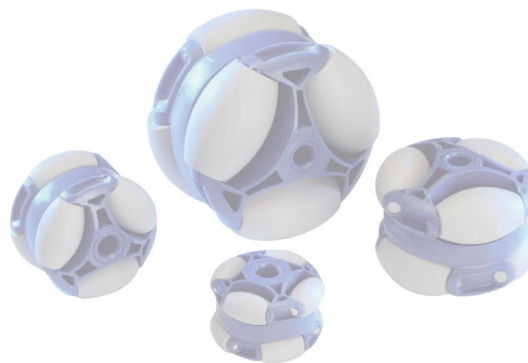
T [°C]  
0° - 80°



ASR-			
Typ	D	B	Tragzahl C [daN]
ASR-80	80	64	40

Weitere Varianten auf Anfrage!

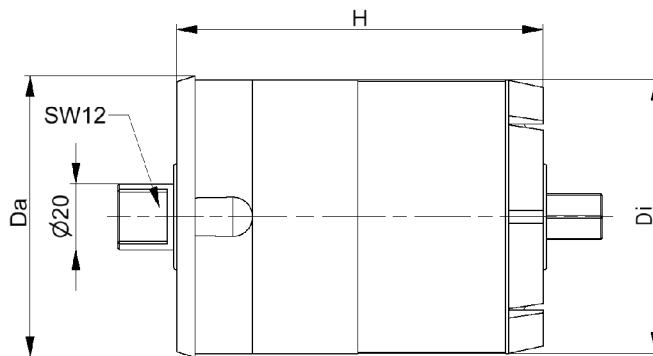
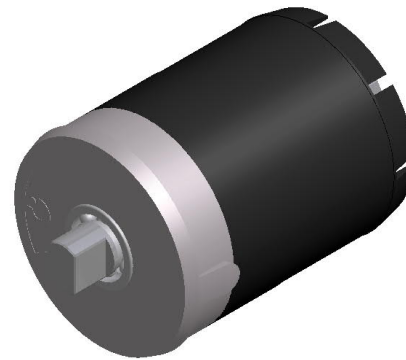
- ☛ Radkörper: Kunststoff
- ☛ Tonnenrolle: Kunststoff
- ☛ Achse: 1.4301



Karton [Stck.]

50

# Allseitenrollen

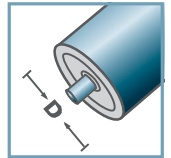


BR-89x3,0-				
Typ	Da	Di	H	Palette max. [kg]
200	88,5	83	115	200
500	88,5	83	115	500
800	88,5	83	115	800
1200	88,5	83	115	1200

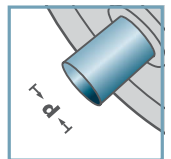
Bremsrolleneinsatz



Bremsrolle



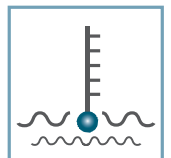
D [mm]  
89



d [mm]  
20



C [daN]  
250



T [°C]  
0° - 80°



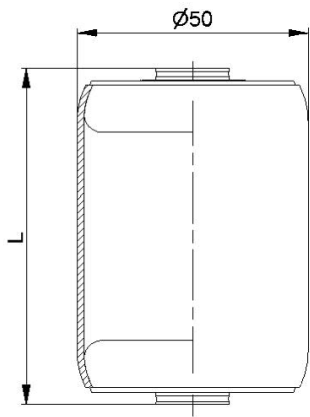
EP2



Karton [Stck.]

20

# Bremsrollen

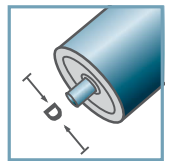


AMR-50x1,5.20		
Typ	L	Tragzahl C [daN]
AMR-50x1,5.20-66	66	160
AMR-50x1,5.20-73	73	160
AMR-50x1,5.20-80	80	160
AMR-50x1,5.20-100	100	160
Weitere Varianten auf Anfrage!		

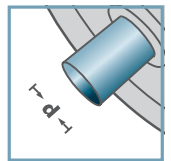
- ☛ Rohr: Stahl, verzinkt
- ☛ Metalltragrollenlager MTR-20



AMR-50.20



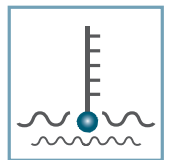
D [mm]  
50



d [mm]  
8; 10; 12; SW11



C [daN]  
160



T [°C]  
0° - 100°

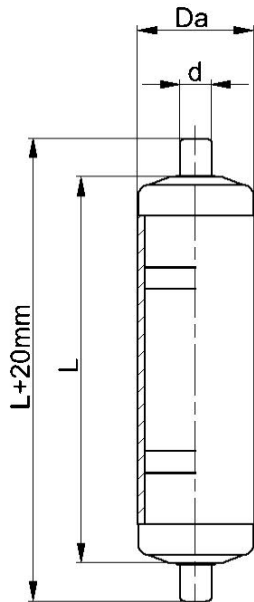


Öl

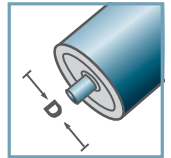


Karton [Stck.]

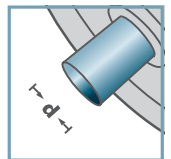
# Achslose Kurzrollen



AKR-00/01



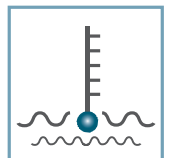
D [mm]  
20; 30; 40



d [mm]  
6; 8



C [daN]  
10; 15



T [°C]  
0° - 80°



Karton [Stck.]

AKR-00/01				
Typ	D	d	L max.	Tragzahl C [daN]
AKR-20x1,5.00.L	20	6	300	10
AKR-30x1,8.00.L	30	8	400	15
AKR-40x2,3.00.L	40	8	400	15
Weitere Varianten auf Anfrage!				

- ☛ Rohr: Kunststoff
- ☛ Kunststoffrollenlager KTR-00/01 mit Federachse



# Achslose Kunststoffrollen mit Federachse