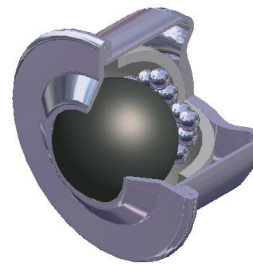
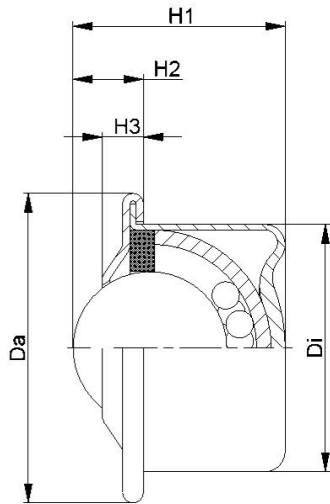


Additional products/Attachment



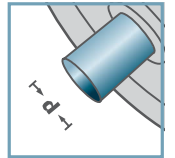
ADDITIONAL PRODUCTS



KRO						
Type	Da	Di	H1	H2	H3	Load Rating C [daN]
KRO-015L	31,0	24,0	21,0	9,5	5,5	50
KRO-022L	45,0	36,0	30,5	10,0	6,0	120
KRO-015	31,0	24,0	21,0	9,5	5,5	120
KRO-022	45,0	36,0	30,5	10,0	6,0	350



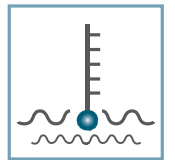
KRO-



d [mm]
-



C [daN]
50 - 120



T [°C]
-30° - 100°



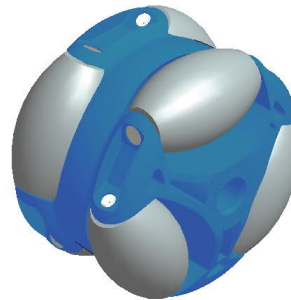
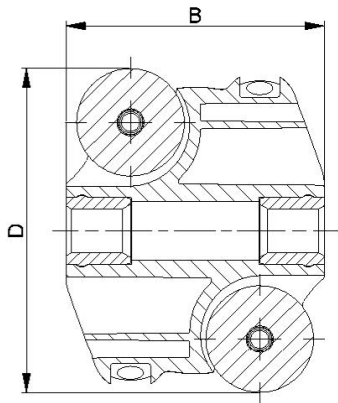
-



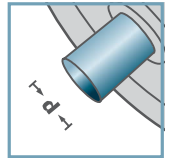
Carton [pcs.]

015L: 400
022L: 100

Ball Transfer Unit



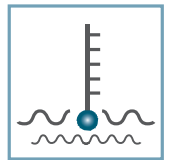
ASR-



d [mm]
8; 10; SW9



C [daN]
10 - 20



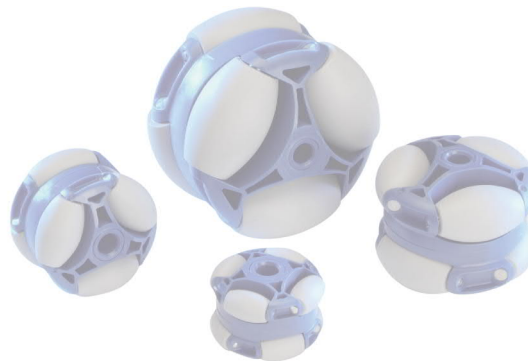
T [°C]
0° - 80°



ASR-			
Type	D	B	Load Rating C [daN]
ASR-40	40	29	10
ASR-48	48	39	15
ASR-60	60	48	20

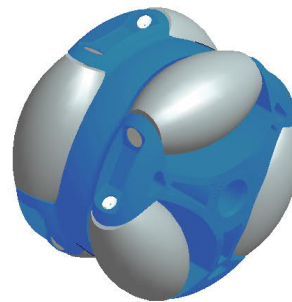
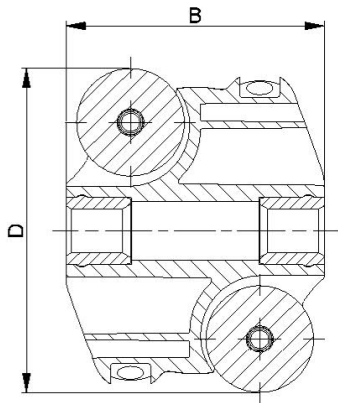
Other dimensions on request!

- ☛ Housing: Plastic
- ☛ Barrel-shaped Roller: Plastic
- ☛ Axis: 1.4301



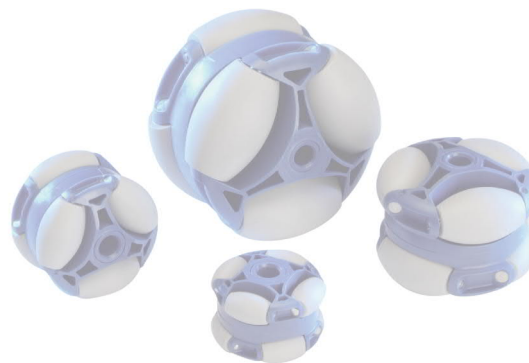
Carton [pcs.]

Polydirectional Wheel

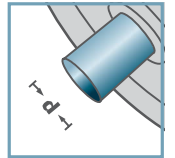


ASR-			
Type	D	B	Load Rating C [daN]
ASR-80	80	64	40
Other dimensions on request!			

- ☛ Housing: Plastic
- ☛ Barrel-shaped Roller: Plastic
- ☛ Axis: 1.4301



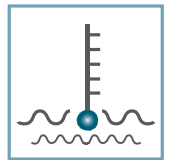
ASR-



d [mm]
8; 12;15; SW14



C [daN]
40



T [°C]
0° - 80°



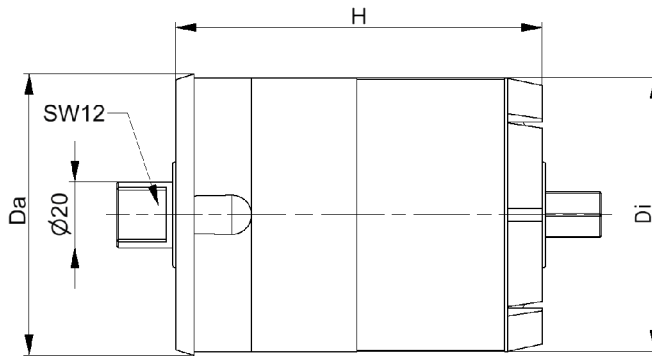
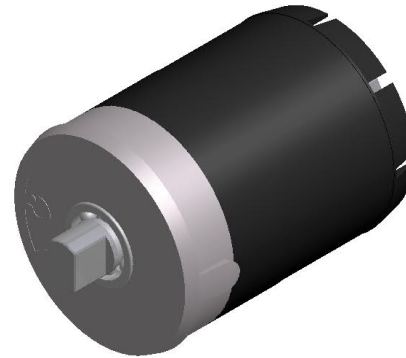
-



Carton [pcs.]

50

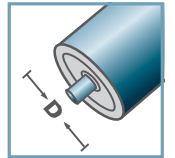
Polydirectional Wheel



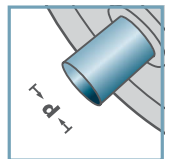
BR-89x3,0-				
Type	Da	Di	H	Load Rating [kg]
200	88,5	83	115	200
500	88,5	83	115	500
800	88,5	83	115	800
1200	88,5	83	115	1200



Brake Roller Unit



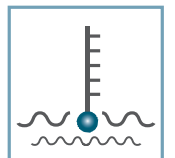
D [mm]
89



d [mm]
20



C [daN]
250



T [°C]
0° - 80°



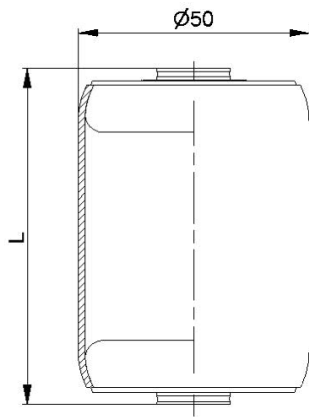
EP2



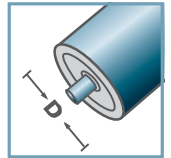
Carton [pcs.]

20

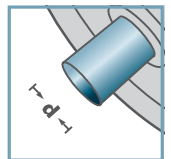
Brake Roller Unit



AMR-50.20



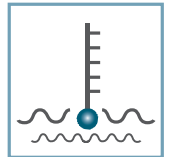
D [mm]
50



d [mm]
8; 10; 12; SW11



C [daN]
160



T [°C]
0° - 100°



Oil



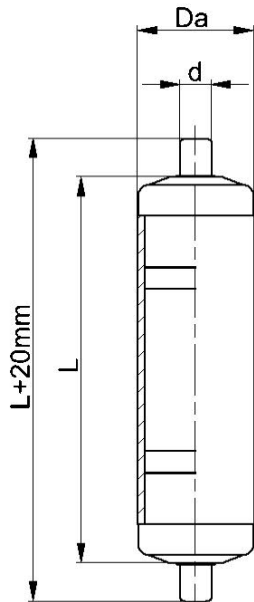
Carton [pcs.]

AMR-50x1,5.20		
Type	L	Load Rating C [daN]
AMR-50x1,5.20-66	66	160
AMR-50x1,5.20-73	73	160
AMR-50x1,5.20-80	80	160
AMR-50x1,5.20-100	100	160
Other dimensions on request!		

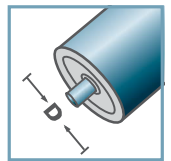
- 🔩 Tube: Steel, Zinc plated
- 🔩 Metal Roller Bearing MTR-20



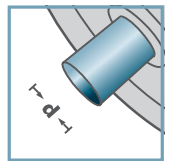
Metal Roller



AKR-00/01



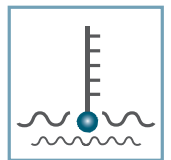
D [mm]
20; 30; 40



d [mm]
6; 8



C [daN]
10; 15



T [°C]
0° - 80°



Carton [pcs.]

AKR-00/01				
Type	D	d	L max.	Load Rating C [daN]
AKR-20x1,5.00.L	20	6	300	10
AKR-30x1,8.00.L	30	8	400	15
AKR-40x2,3.00.L	40	8	400	15
Other dimensions on request!				

- ☛ Tube: Plastic
- ☛ Plastic Roller Bearing KTR-00/01 with spring axis



Plastic Rollers with Spring Axis