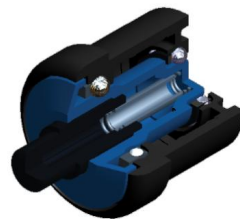
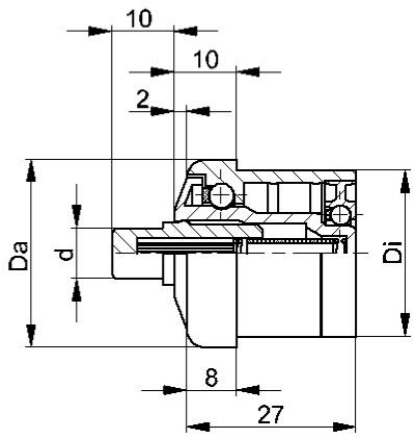


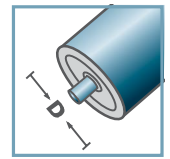
Kunststofftragrollenlager KTR bis 10 daN



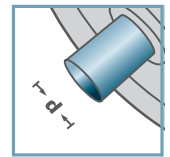
KTR



KTR-.00 FA
KTR-.01 FA



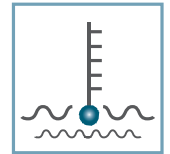
D [mm]
20, 30, 40, 50



d [mm]
6; 8; 10



C [daN]
8 - 20



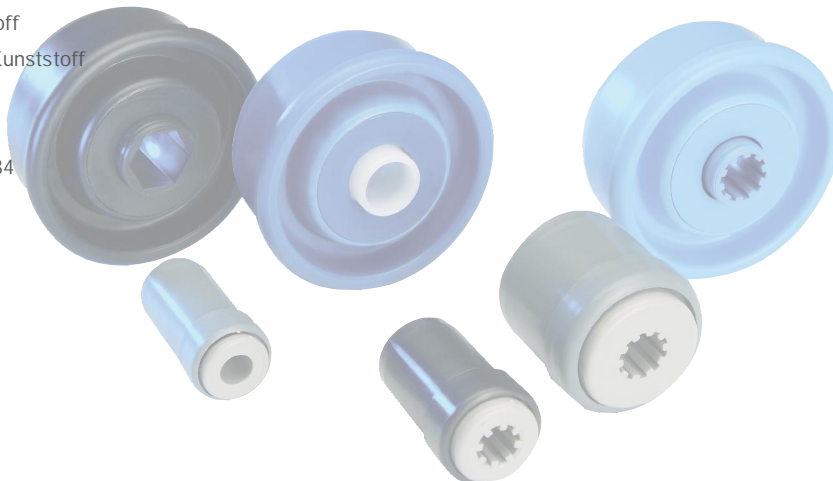
T [°C]
0° - 80°



KTR-.00/.01 FA						
Typ	Normal .00	Niro .01	Di +0,25	Da	d	Tragzahl C [daN]
KTR-20x1,5	x	x	17,1	19,9	6	8
KTR-30x1,8	x	x	26,5	29,9	8/10	10
KTR-40x2,3	x	x	35,5	39,9	8/10	10
KTR-50x1,5	x	x	47,3	49,9	8/10	20
KTR-50x2,8	x	x	44,6	49,9	8/10	20

Weitere Varianten auf Anfrage!

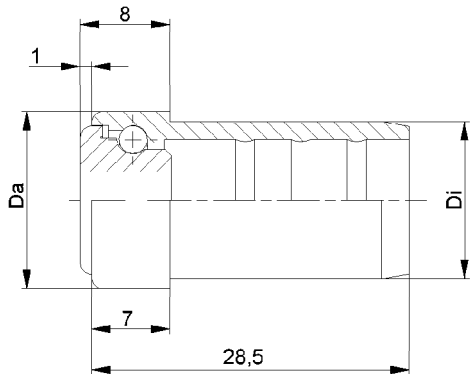
- ☛ Radkörper: Kunststoff
- ☛ Nabe: Kunststoff
- ☛ Käfig: Kunststoff
- ☛ Achse: Kunststoff
- ☛ Lagerscheibe: Kunststoff
- ☛ Kugel, Feder
 - ☛ 00: Stahl
 - ☛ 01: 1.4034



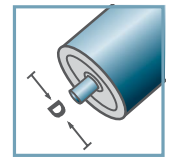
Karton [Stck.]

ø20: 400
ø30: 250/500
ø40: 250/500
ø50: 200

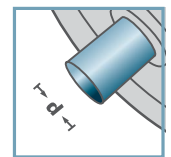
KTR



KTR-16.00
KTR-16.01



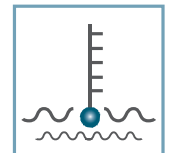
D [mm]
16



d [mm]
5; 6



C [daN]
3



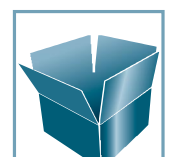
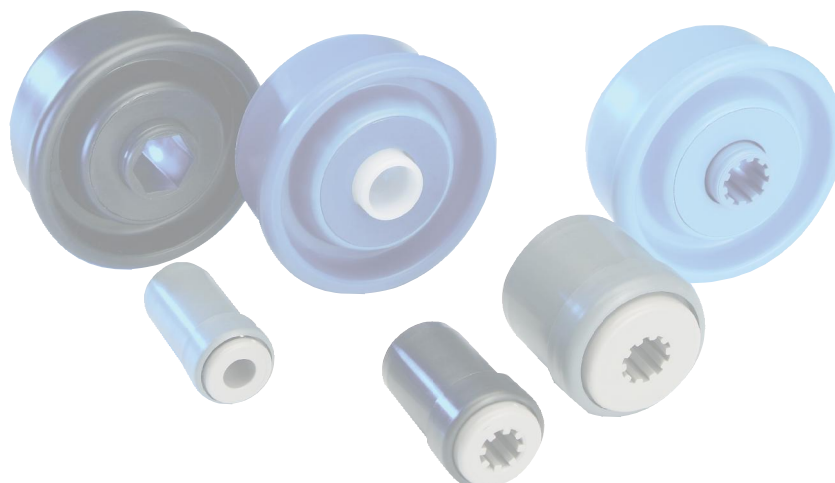
T [°C]
0° - 80°



KTR-16.00/.01					
Typ	Normal .00	Niro .01	Di +0,15	Da	Tragzahl C [daN]
KTR-16x1,0	x	x	14,1	15,9	3

Weitere Varianten auf Anfrage!

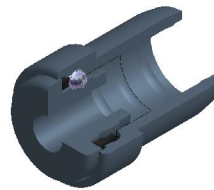
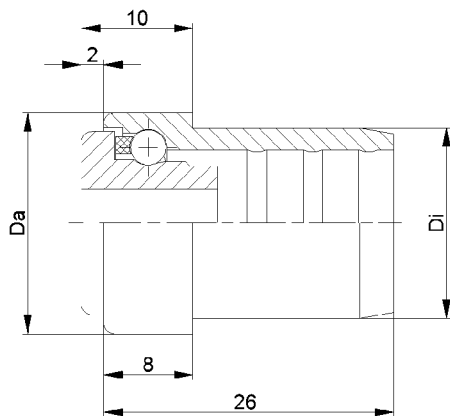
- ☛ Radkörper: Kunststoff
- ☛ Nabe: Kunststoff
- ☛ Kugel
 - ☛ 00: Stahl
 - ☛ 01: 1.4034



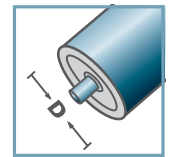
Karton [Stck.]

500/2500

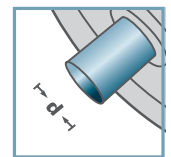
KTR



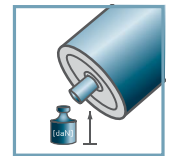
KTR-20.00
KTR-20.01



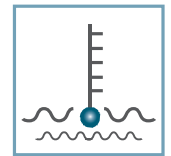
D [mm]
20



d [mm]
6; 8



C [daN]
5



T [°C]
0° - 80°



Karton [Stck.]

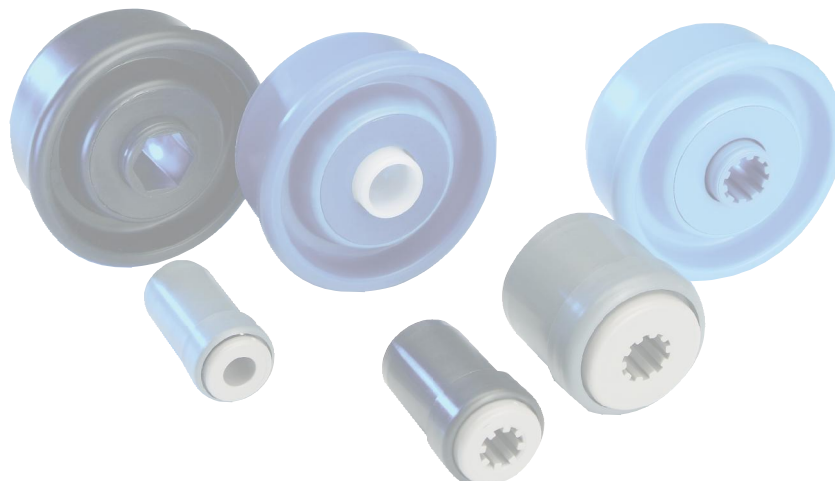
500/1000

KTR-20.00/.01

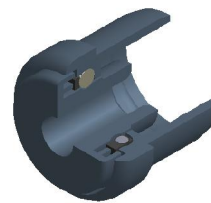
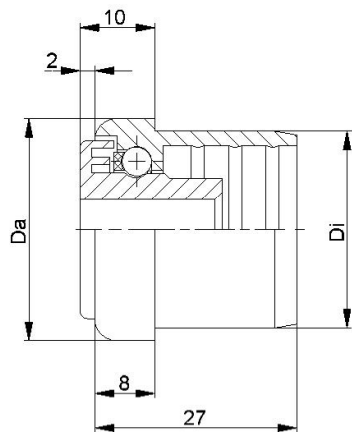
Typ	Normal .00	Niro .01	Di +0,15	Da	Tragzahl C [daN]
KTR-20x1,0	x	x	18,1	19,9	5
KTR-20x1,5	x	x	17,1	19,9	5

Weitere Varianten auf Anfrage!

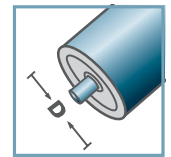
- ☛ Radkörper: Kunststoff
- ☛ Nabe: Kunststoff
- ☛ Käfig: Kunststoff
- ☛ Kugel
 - ☛ 00: Stahl
 - ☛ 01: 1.4034



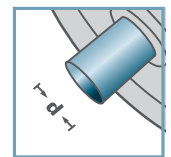
KTR



KTR-30.00
KTR-30.01



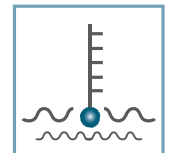
D [mm]
30



d [mm]
6; 8; 10



C [daN]
7



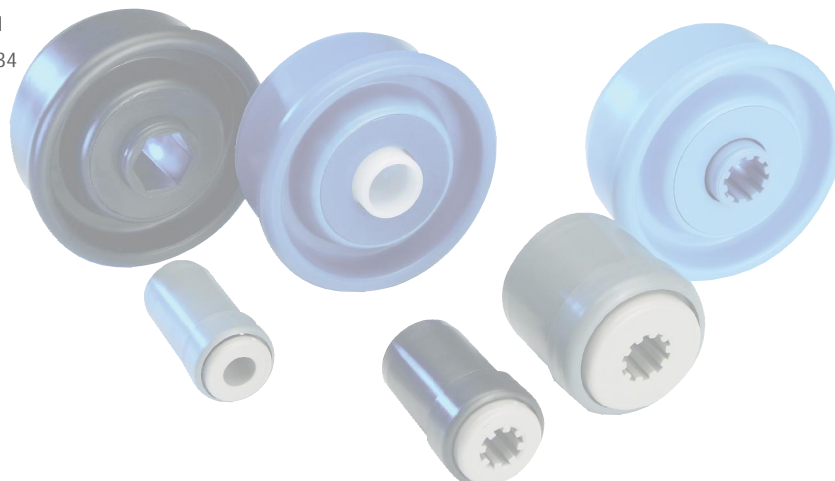
T [°C]
0° - 80°



KTR-30.00/.01					
Typ	Normal .00	Niro .01	Di +0,25	Da	Tragzahl C [daN]
KTR-30x1,0	x	x	28,1	29,9	7
KTR-30x1,5	x	x	27,1	29,9	7
KTR-30x1,8	x	x	26,5	29,9	7
KTR-30x2,0	x	x	26,35	29,9	7

Weitere Varianten auf Anfrage!

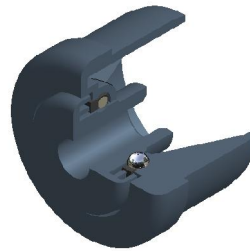
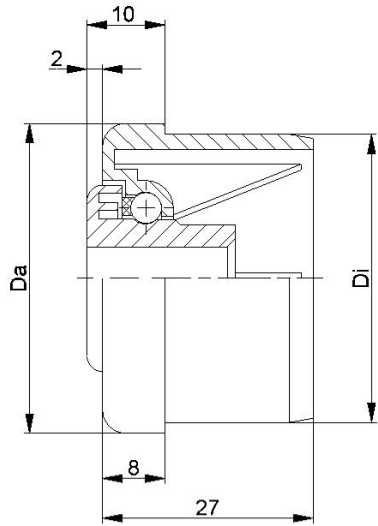
- ☛ Radkörper: Kunststoff
- ☛ Nabe: Kunststoff
- ☛ Käfig: Kunststoff
- ☛ Kugel
 - ☛ 00: Stahl
 - ☛ 01: 1.4034



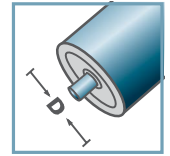
Karton [Stck.]

250/500

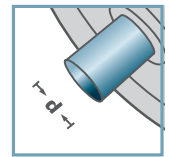
KTR



KTR-40.00
KTR-40.01



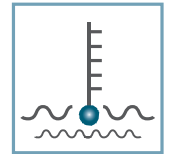
D [mm]
40



d [mm]
6; 8; 10



C [daN]
7



T [°C]
0° - 80°



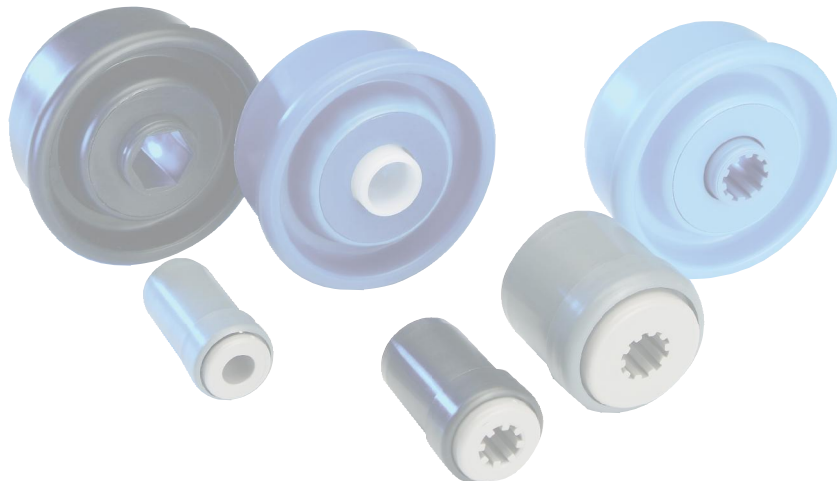
Karton [Stck.]

250

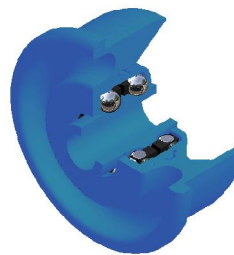
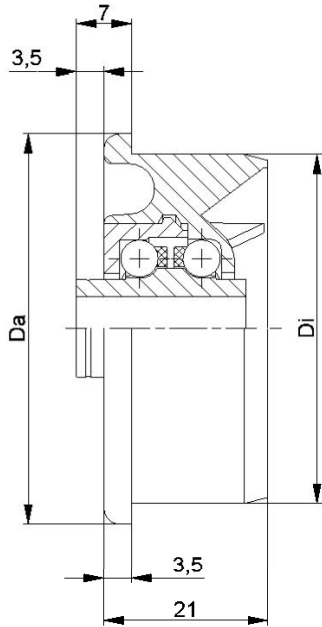
KTR-40.00/.01					
Typ	Normal .00	Niro .01	Di +0,25	Da	Tragzahl C [daN]
KTR-40x1,5	x	x	37,1	39,9	7
KTR-40x2,3	x	x	35,5	39,9	7

Weitere Varianten auf Anfrage!

- ☛ Radkörper: Kunststoff
- ☛ Nabe: Kunststoff
- ☛ Käfig: Kunststoff
- ☛ Kugel
 - ☛ 00: Stahl
 - ☛ 01: 1.4034



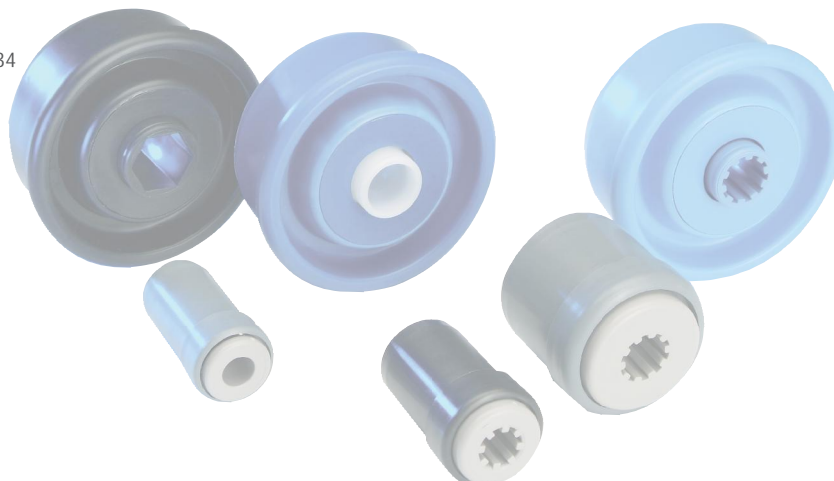
KTR



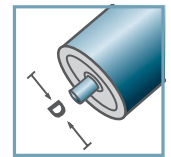
KTR-02/03					
Typ	Normal .02	Niro .03	Di +0,2	Da	Tragzahl C [daN]
KTR-50x1,5	x	x	47,3	49,9	15
KTR-50x2,0	x	x	46,3	49,9	15
KTR-50x2,8	x	x	44,6	49,9	15

Weitere Varianten auf Anfrage!

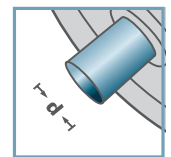
- ☛ Radkörper: Kunststoff
- ☛ Nabe: Kunststoff
- ☛ Lagerdeckel: Kunststoff
- ☛ Käfig: Kunststoff
- ☛ Kugel
 - ☛ 02: Stahl
 - ☛ 03: 1.4034



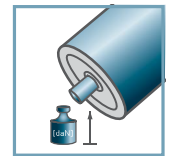
KTR-02
KTR-03



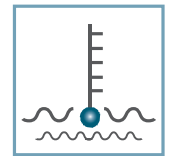
D [mm]
50



d [mm]
8; 10



C [daN]
15



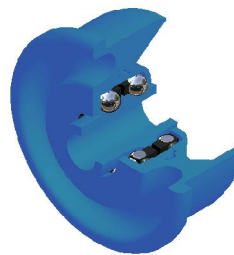
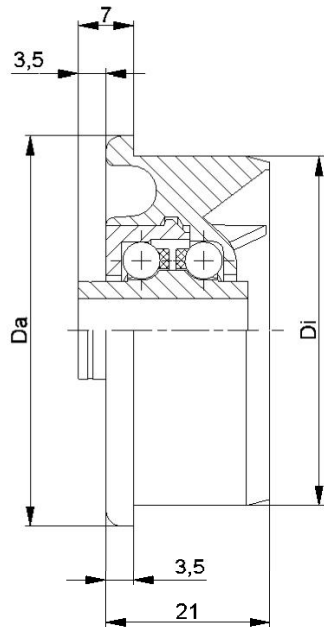
T [°C]
0° - 80°



Karton [Stck.]

50x1,5: 250
50x2,0: 250
50x2,8: 250

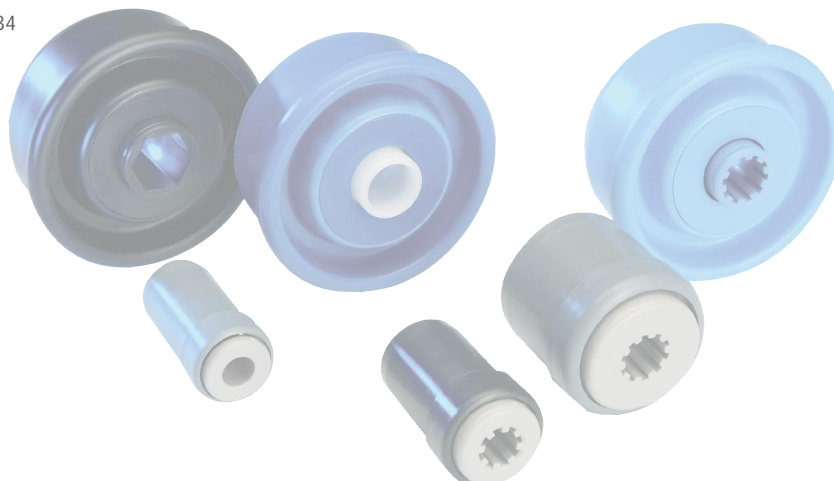
KTR



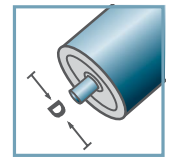
KTR-02/03					
Typ	Normal .02	Niro .03	Di +0,2	Da	Tragzahl C [daN]
KTR-50x1,5	x	x	47,3	49,9	10
KTR-50x2,8	x	x	44,6	49,9	10

Weitere Varianten auf Anfrage!

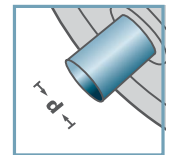
- ☛ Radkörper: Kunststoff
- ☛ Nabe: Kunststoff
- ☛ Lagerdeckel: Kunststoff
- ☛ Käfig: Kunststoff
- ☛ Kugel
 - ☛ 02: Stahl
 - ☛ 03: 1.4034



KTR-02
KTR-03



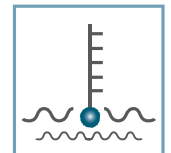
D [mm]
50



d [mm]
12; SW11



C [daN]
10

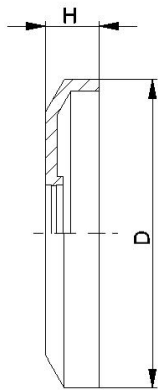


T [°C]
0° - 80°



Karton [Stck.]

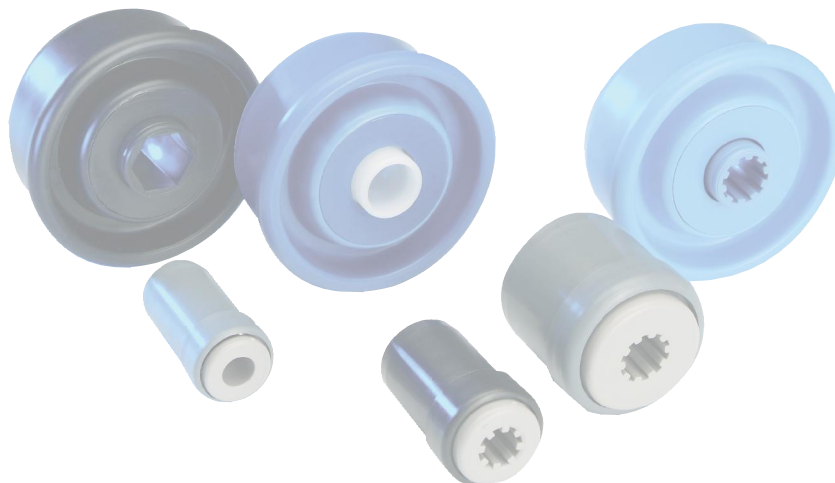
250



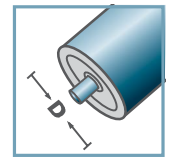
DK-KTR		
Typ	D	H
DK-KTR-02	40,5	7

Weitere Varianten auf Anfrage!

☛ Dichtkappe: Kunststoff

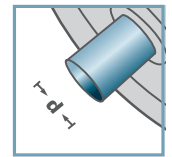


DK-KTR-02



D [mm]

-



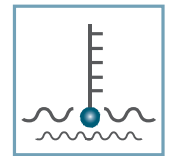
d [mm]

-



C [daN]

-



T [°C]

0° - 80°



-



Karton [Stck.]

-

-

-

-

-

-

-

-

-

-

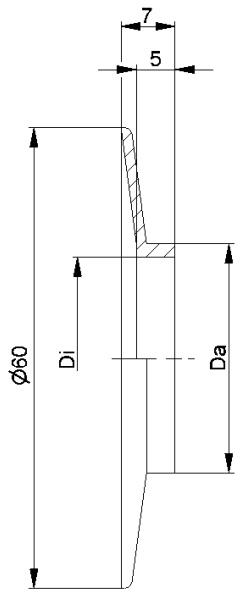
-

-

-

-

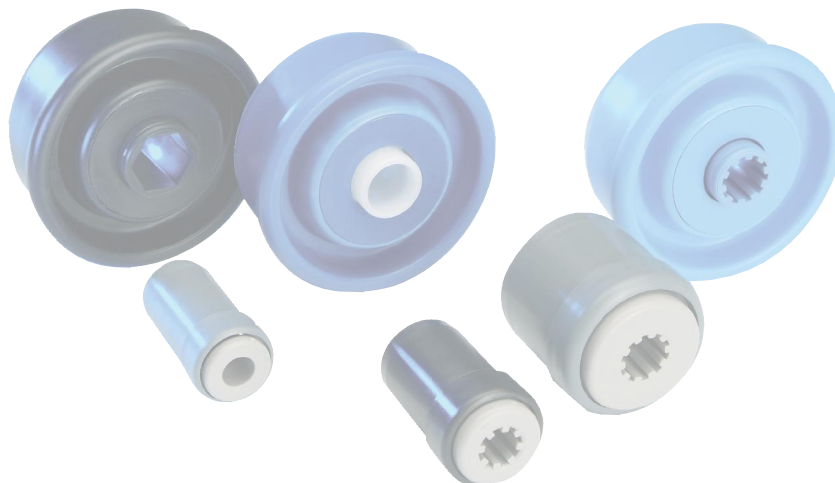
KTR



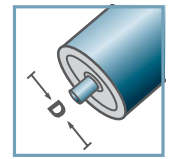
BS-		
Typ	Di	Da
BS-30x1,8	26,5	29,9
BS-40x1,5	37,1	39,9
BS-40x2,3	35,5	39,9

Weitere Varianten auf Anfrage!

Bordscheibe: Kunststoff

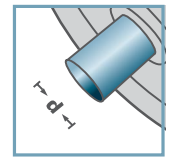


BS-



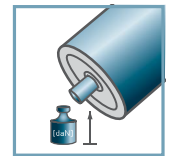
D [mm]

-



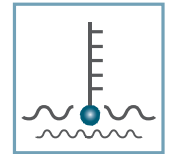
d [mm]

-



C [daN]

-



T [°C]

0° - 80°



-



Karton [Stck.]

