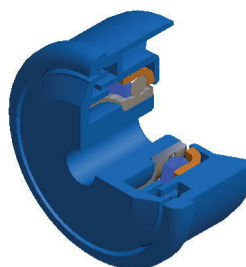
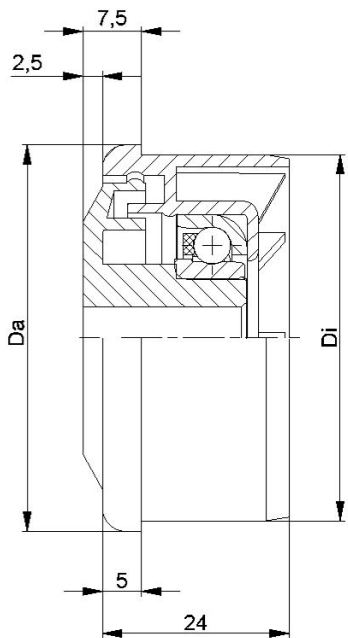


**Plastic roller bearings KTR/KTE up to 150 daN**



**KTR/KTE**

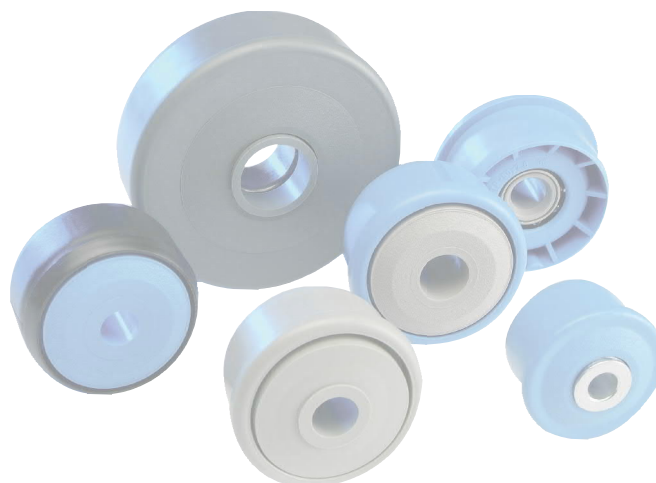


KTR-30			
Type	Di +0,2	Da	Load Rating C [daN]
KTR-50x1,5.30	47,3	49,9	80
KTR-50x2,8.30	44,6	49,9	80
KTR-60x1,5.30	57,3	59,9	80

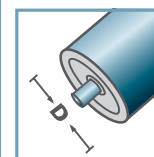
Other dimensions on request!

- ☛ Housing: Plastic
- ☛ Single Labyrinth Seal: Plastic
- ☛ Bearing RL-30
  - ☛ Bearing Shell: Steel, Hardened
  - ☛ Inner Race: Steel, Hardened
  - ☛ Ball Cage: Plastic
  - ☛ Ball: Steel

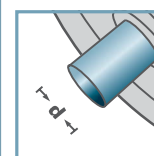
Please note: the single labyrinth seal for axis 15 mm is delivered separately and has to be locked at assembly.



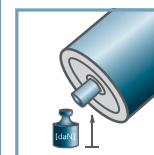
KTR-30



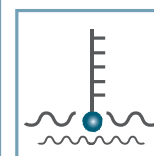
D [mm]  
50 - 60



d [mm]  
10; 12; 15; SW11



C [daN]  
80



T [°C]  
0° - 80°

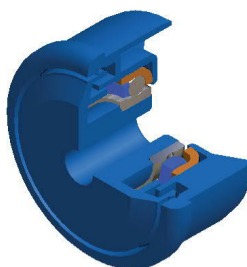
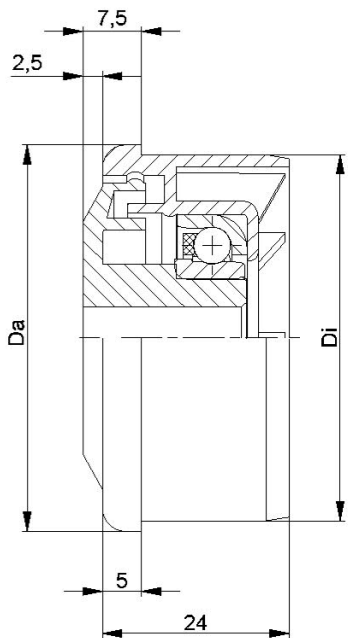


Oil



Carton [pcs.]

ø50: 250  
ø60: 200

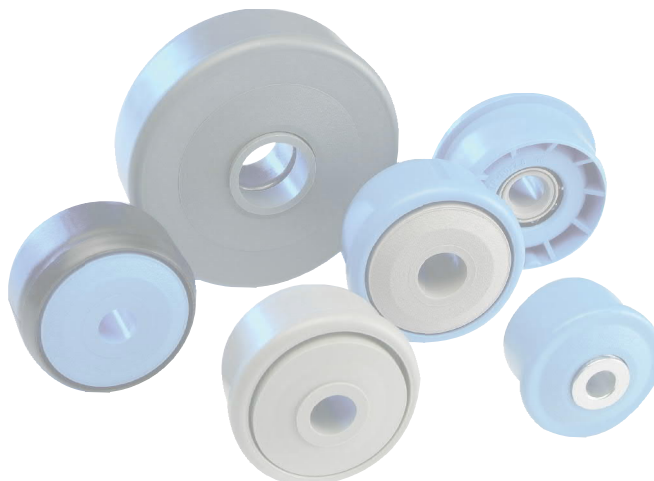


KTR-31			
Type	Di +0,2	Da	Load Rating C [daN]
KTR-50x1,5.31	47,3	49,9	25
KTR-50x2,8.31	44,6	49,9	25
KTR-60x1,5.31	57,3	59,9	25

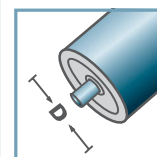
Other dimensions on request!

- ☛ Housing: Plastic
- ☛ Single Labyrinth Seal: Plastic
- ☛ Bearing RL-31
  - ☛ Bearing Shell: 1.4301
  - ☛ Inner Race: 1.4305
  - ☛ Ball Cage: Plastic
  - ☛ Ball: 1.4301

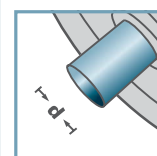
Please note: the single labyrinth seal for axis 15 mm is delivered separately and has to be locked at assembly.



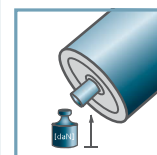
KTR-31



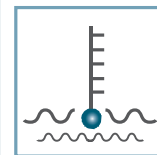
D [mm]  
50 - 60



d [mm]  
10; 12; 15; SW11



C [daN]  
25



T [°C]  
0° - 80°

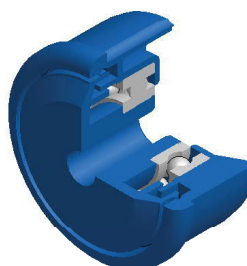
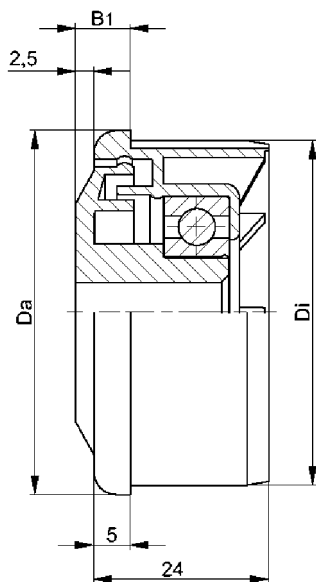


Oil



Carton [pcs.]

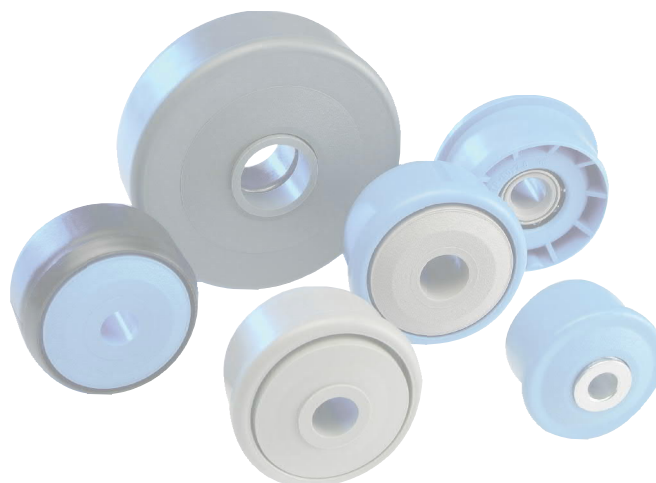
ø50: 250  
ø60: 200



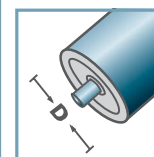
KTR-40				
Type	Di +0,25	Da	B1	Load Rating C [daN]
KTR-50x1,5.40	47,3	49,9	7,5	80
KTR-50x2,0.40	46,3	49,9	7,5	80
KTR-50x2,8.40	44,6	49,9	7,5	80
KTR-60x1,5.40	57,3	59,9	7,5	80
KTR-60x2,0.40	56,3	59,9	7,5	80
Other dimensions on request!				

- Housing: Plastic
- Single Labyrinth Seal: Plastic
- Bearing 6002

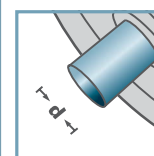
Please note: the single labyrinth seal for axis 15 mm is delivered separately and has to be locked at assembly.



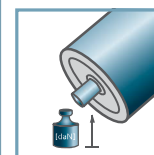
KTR-40



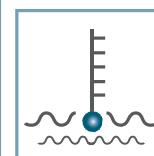
D [mm]  
50 - 60



d [mm]  
10; 12; 15; SW11



C [daN]  
80



T [°C]  
0° - 80°

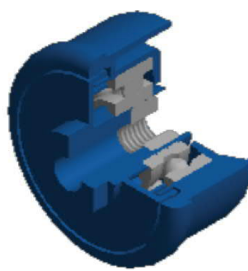
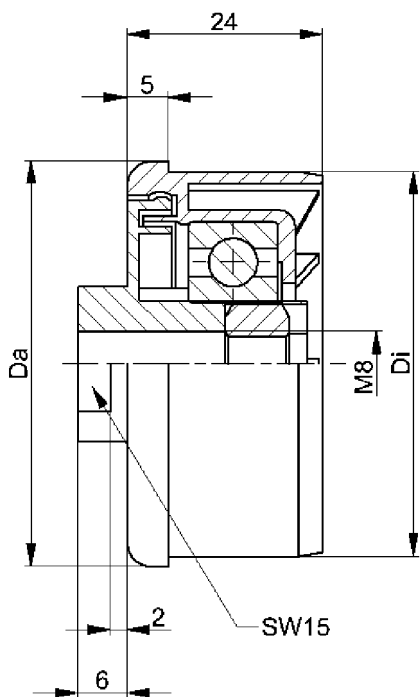


EP 2



Carton [pcs.]

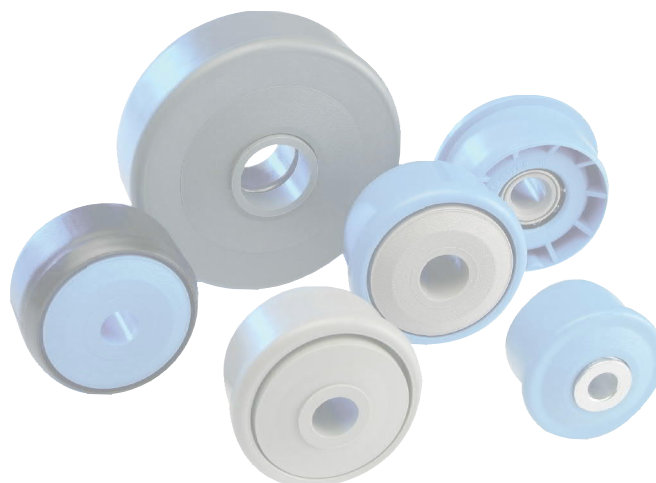
ø40: -  
ø50: 250  
ø60: 200



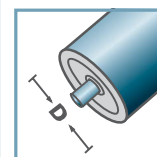
KTR-40.M8			
Type	Di +0,2	Da	Load Rating C [daN]
KTR-50x1,5.40	47,3	49,9	80

Other dimensions on request!

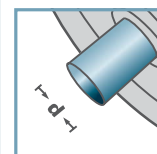
- Housing: Plastic
- Single Labyrinth Seal: Plastic
- Bearing 6202
- Hexagon Nut



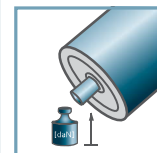
KTR-40.M8



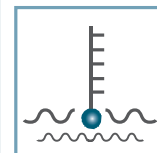
D [mm]  
50



d [mm]  
M8



C [daN]  
80



T [°C]  
0° - 80°

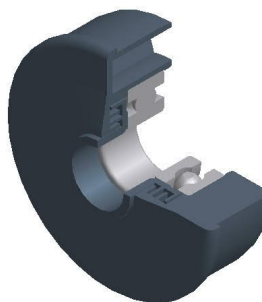
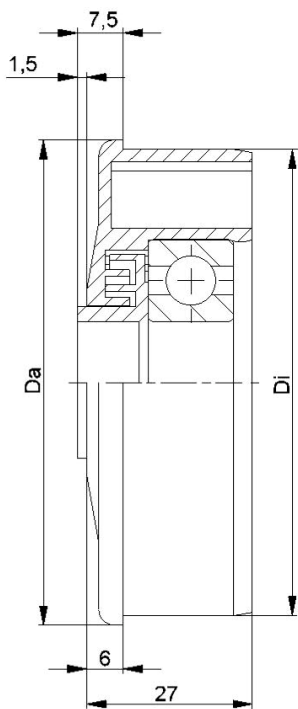


EP 2



Carton [pcs.]

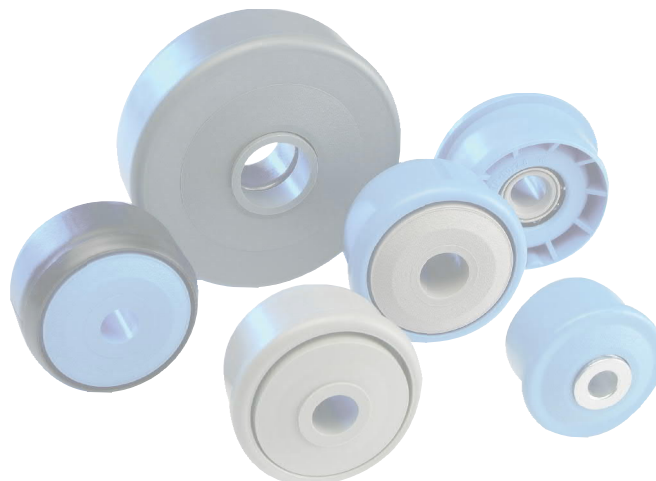
ø50: 250



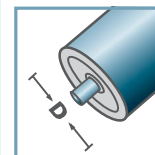
KTR-43/44			
Type	Di +0,2	Da	Load Rating C [daN]
KTR-63,5x2,9.43/.44	58,0	63,4	150
KTR-80x2,0.43/.44	76,4	79,9	150

Other dimensions on request!

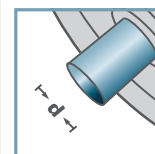
- ☛ Housing: Plastic
- ☛ Multiple Labyrinth Seal: Plastic
- ☛ Bearing 6303/6204



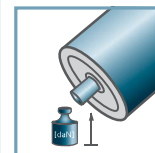
KTR-43/44



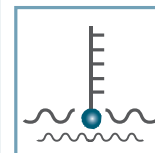
D [mm]  
63,5 - 80



d [mm]  
6303: 17  
6204: 20



C [daN]  
150



T [°C]  
0° - 80°

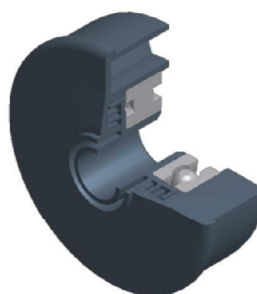
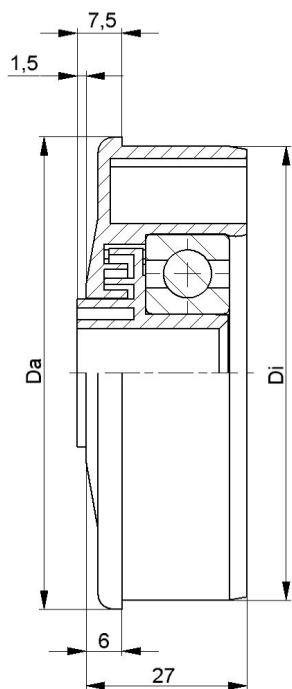


EP 2



Carton [pcs.]

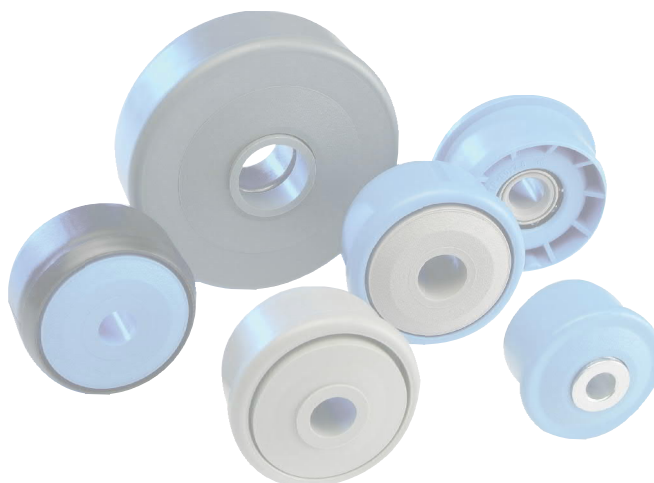
100



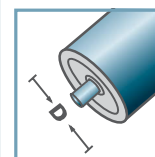
KTR-43/44			
Type	Di +0,2	Da	Load Rating C [daN]
KTR-63,5x2,9.43/.44	58,0	63,4	150
KTR-80x2,0.43/.44	76,4	79,9	150

Other dimensions on request!

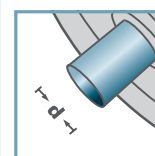
- Housing: Plastic
- Multiple Labyrinth Seal: Plastic
- Bearing 6303/6204



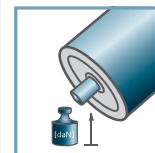
KTR-43/44



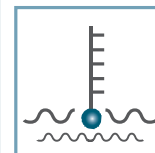
D [mm]  
63,5 - 80



d [mm]  
6303: 12  
6204: 15



C [daN]  
150



T [°C]  
0° - 80°



EP 2



Carton [pcs.]

100