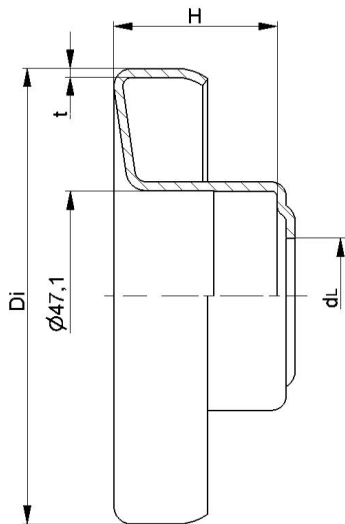


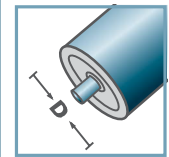
Lagerhalter LH/KLH/FL



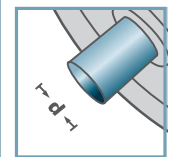
LH/KLH/FL



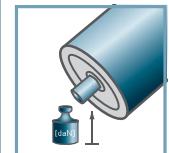
LH /6204



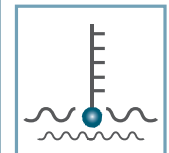
D [mm]  
63,5 - 133



d [mm]  
20



C [daN]  
-



T [°C]  
-

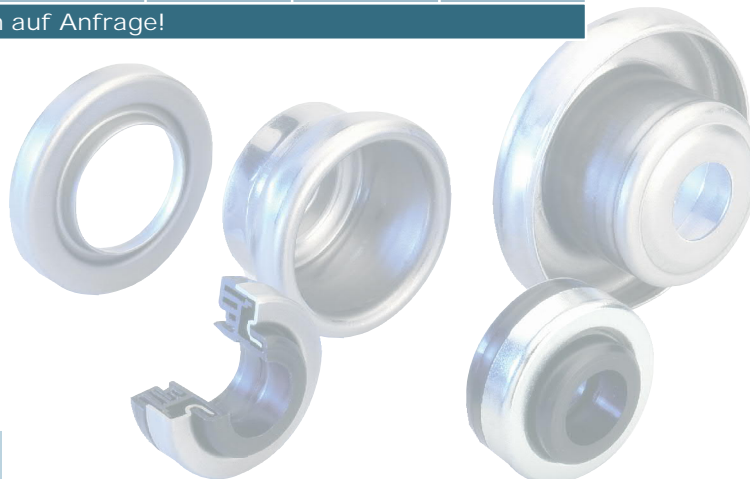


6204:  
D47, d20, H14

LH /6204				
Typ	Di	H	dL	t
LH-63,5x1,75/6204	60,5	33	26	1,5
LH-63,5x2,9/6204	58,2	33	26	1,5
LH-80x2,0/6204	76,5	36,5	26	2,0
LH-80x3,0/6204	74,5	36,5	26	2,0
LH-89x3,0/6204	83,5	36,5	26	2,0
LH-108x2,5/6204	103,3	36,5	26	2,0
LH-108x2,9/6204	102,8	36,5	26	2,0
LH-108x3,25/6204	102,1	36,5	26	2,0
LH-133x3,6/6204	126,3	36,5	26	2,5

Weitere Varianten auf Anfrage!

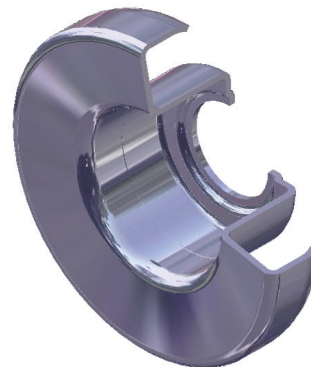
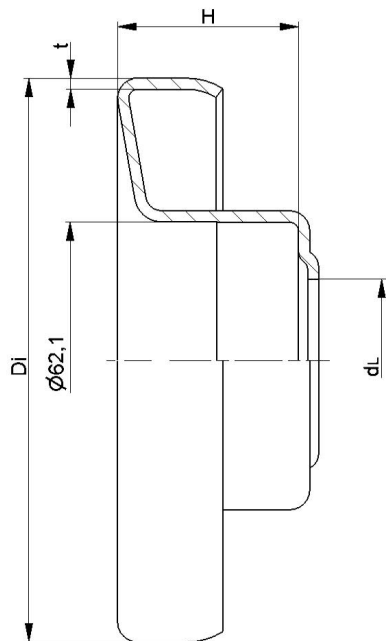
🔩 Lagerhalter: Stahl



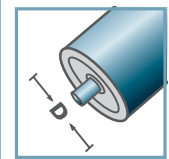
Gitterbox [Stck.]

ø63,5: 6000  
ø80: 3500  
ø89: 3100  
ø108: 2000  
ø133: 1150

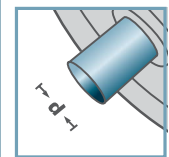
LH/FL



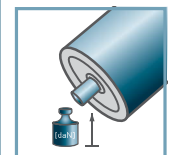
LH /6305



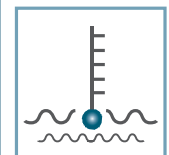
D [mm]  
89 - 159



d [mm]  
25



C [daN]  
-



T [°C]  
-



6305:  
D62, d25, H17



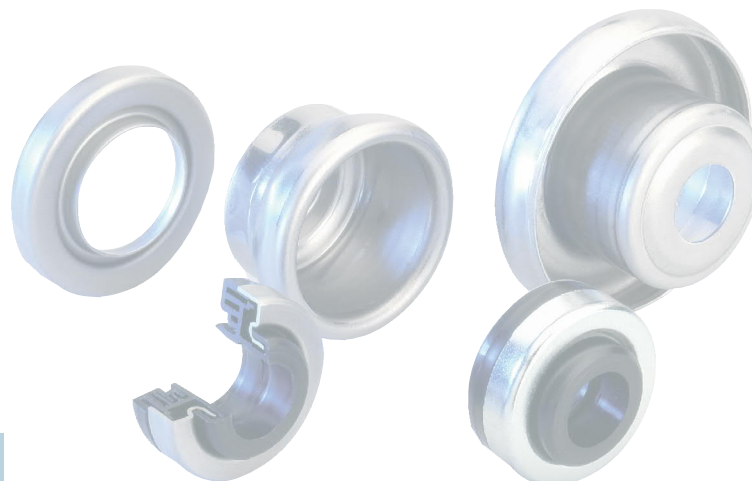
Gitterbox [Stck.]

ø89: 2600  
ø108: 1900  
ø133: 1150

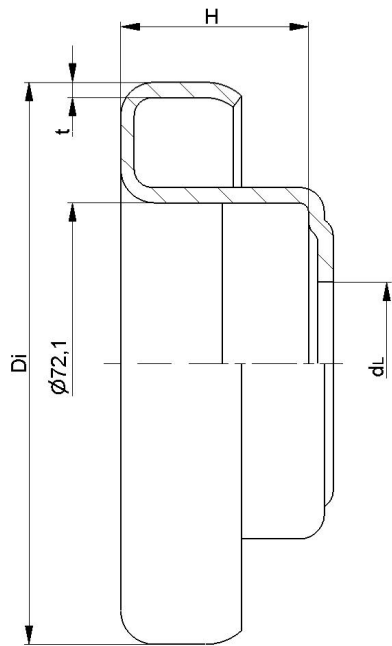
LH /6305				
Typ	Di	H	dL	t
LH-89x3,0/6305	83,5	40,5	36,5	2,0
LH-108x2,5/6305	103,3	40,5	36,5	2,0
LH-108x3,25/6305	102,1	40,5	36,5	2,0
LH-127x2,9/6305	121,7	40,5	36,5	2,5
LH-133x3,6/6305	126,3	40,5	36,5	2,5
LH-159x4,5/6305	150,5	40,5	36,5	2,5

Weitere Varianten auf Anfrage!

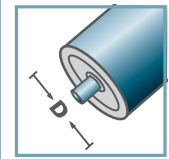
🔩 Lagerhalter: Stahl



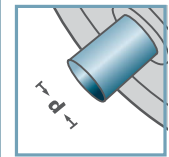
LH/FL



LH /6306



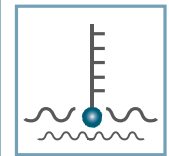
D [mm]  
108 - 159



d [mm]  
30



C [daN]  
-



T [°C]  
-



6306:  
D72, d30, H19



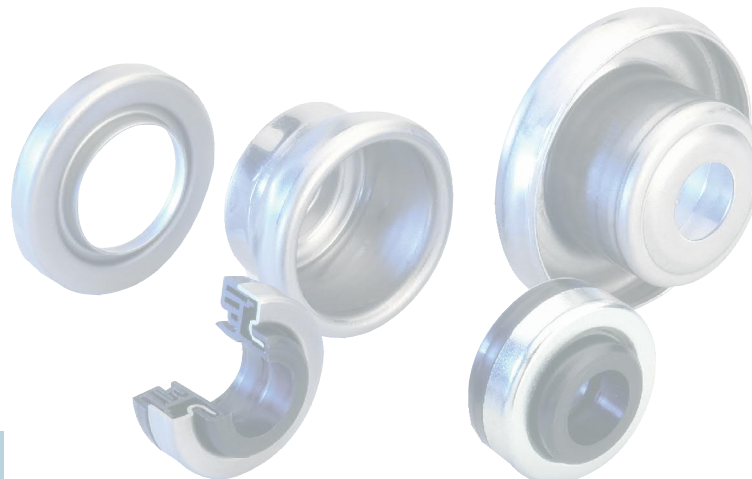
Gitterbox [Stck.]

ø108: 1700  
ø133: 1000

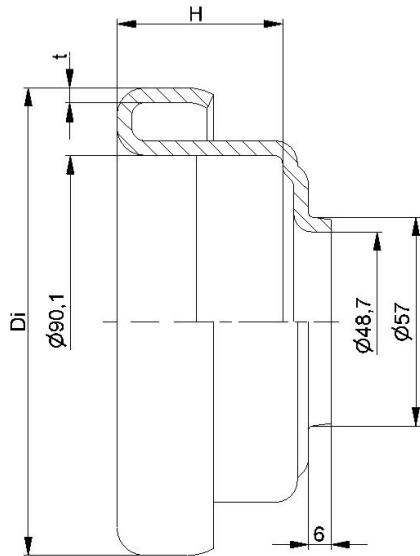
LH /6306				
Typ	Di	H	dL	t
LH-108x3,25/6306	102,1	42	36,5	3,0
LH-133x3,6/6306	126,3	42	36,5	3,5
LH-159x4,5/6306	150,5	42	36,5	2,5

Weitere Varianten auf Anfrage!

Lagerhalter: Stahl



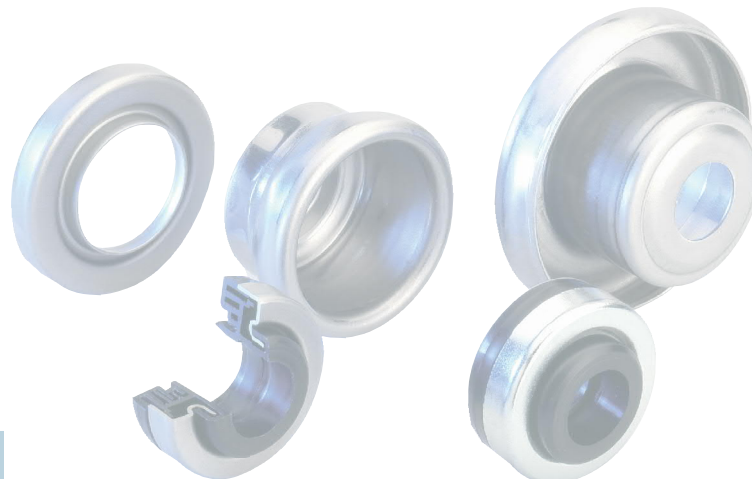
LH/FL



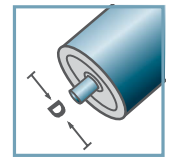
LH /6308			
Typ	Di	H	t
LH-133x3,6/6308	126,3	44,6	4,0
LH-159x4,5/6308	150,8	44,6	4,0

Weitere Varianten auf Anfrage!

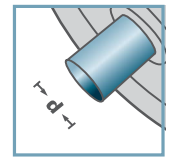
Lagerhalter: Stahl



LH /6308



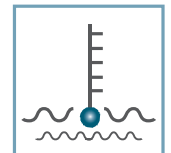
D [mm]  
133 - 159



d [mm]  
40



C [daN]  
-



T [°C]  
-



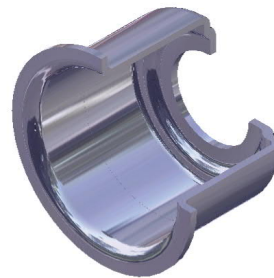
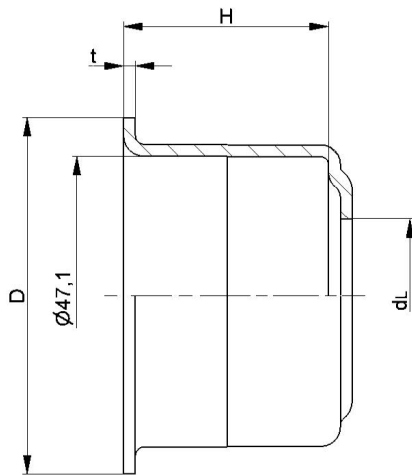
6308:  
D90, d40, H23



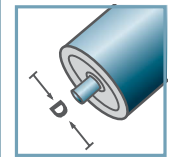
Gitterbox [Stck.]

ø133: 800  
ø159: 600

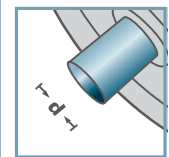
LH/FL



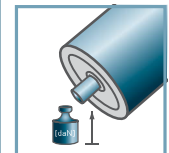
FL /6204



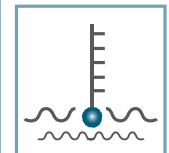
D [mm]  
60 - 76



d [mm]  
20



C [daN]  
-



T [°C]  
-



6204:  
D47, d20, H14



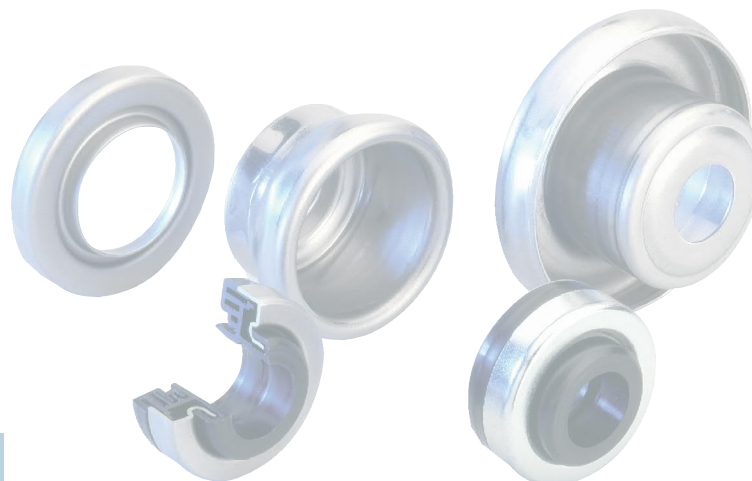
Gitterbox [Stck.]

ø60: 4000  
ø63,5: 4000  
ø70: 2000  
ø76: 2000

FL /6204				
Typ	D	H	dL	t
FL-60x3,0/6204	58,1	34	26	2,0
FL-63,5x2,9/6204	60,0	34,5	26	2,0
FL-76/6204	73,5	34,5	26	2,0

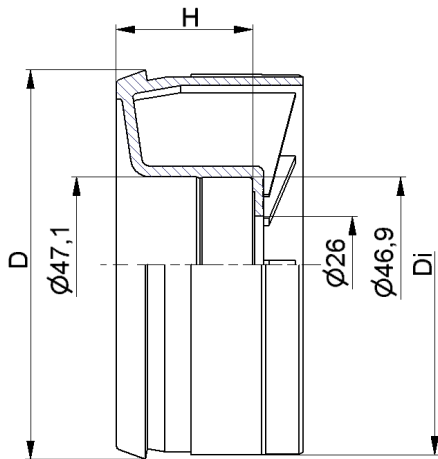
Weitere Varianten auf Anfrage!

☛ Lagerhalter: Stahl



LH/FL

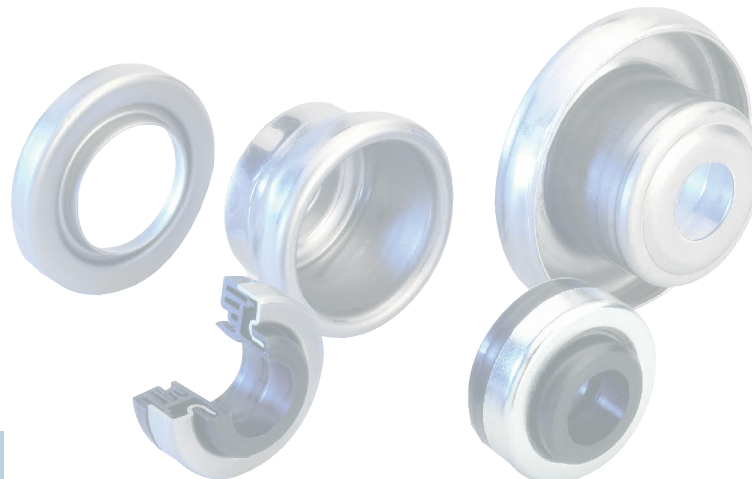




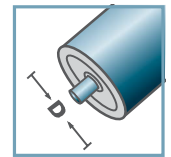
KLH /6204			
Typ	Di	H	D
KLH-89x3,0/6204	83,2	36,5	85,3
KLH-108x3,0/6204	102,2	36,5	104,3

Weitere Varianten auf Anfrage!

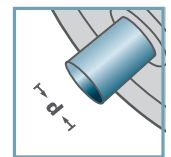
Lagerhalter: Kunststoff



KLH /6204



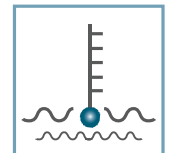
D [mm]  
89 - 108



d [mm]  
20



C [daN]  
-



T [°C]  
100°



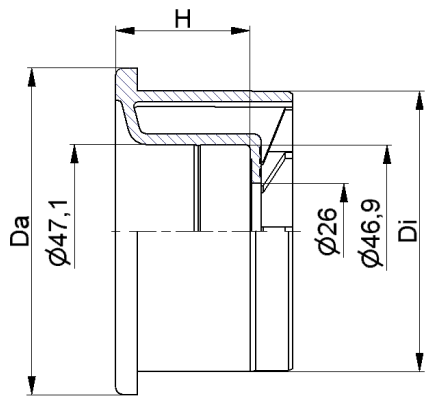
6204:  
D47, d20, H14



Gitterbox [Stck.]

1000

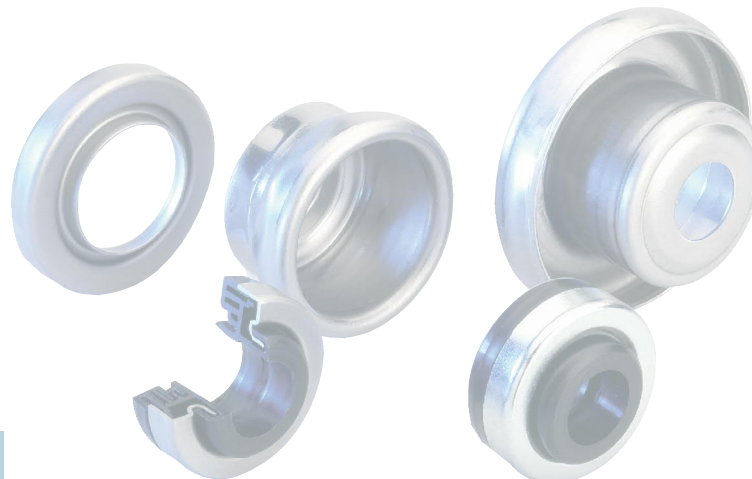
LH/FL



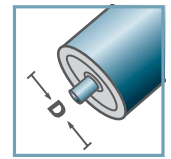
KLH /6204			
Typ	Da	Di	H
KLH-90x7,0/6204	88,8	76,3	36,5

Weitere Varianten auf Anfrage!

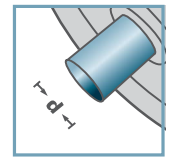
🔧 Lagerhalter: Kunststoff



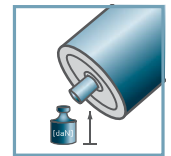
KLH /6204



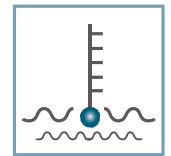
D [mm]  
90



d [mm]  
20



C [daN]  
-



T [°C]  
100°



6204:  
D47, d20, H14

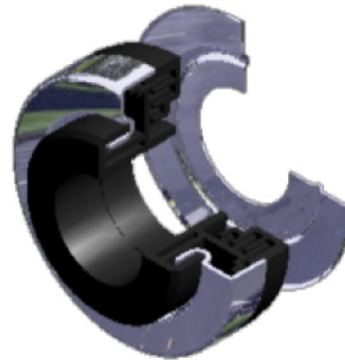
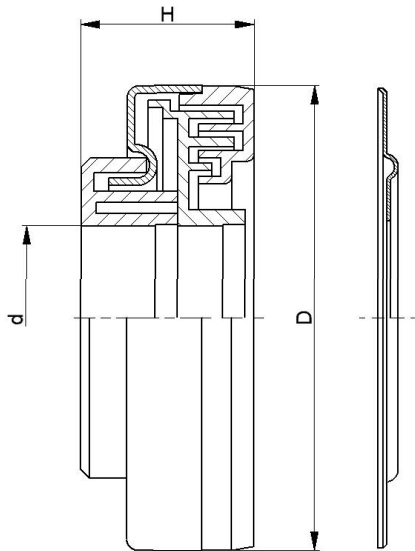


Gitterbox [Stck.]

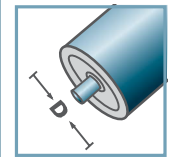
1000

LH/FL



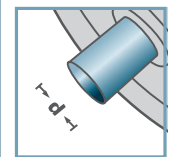


Labyrinth LH-

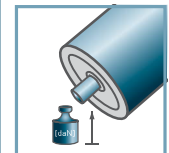


D [mm]

-

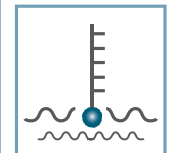


d [mm]  
17 - 40



C [daN]

-



T [°C]  
0° - 80°



-



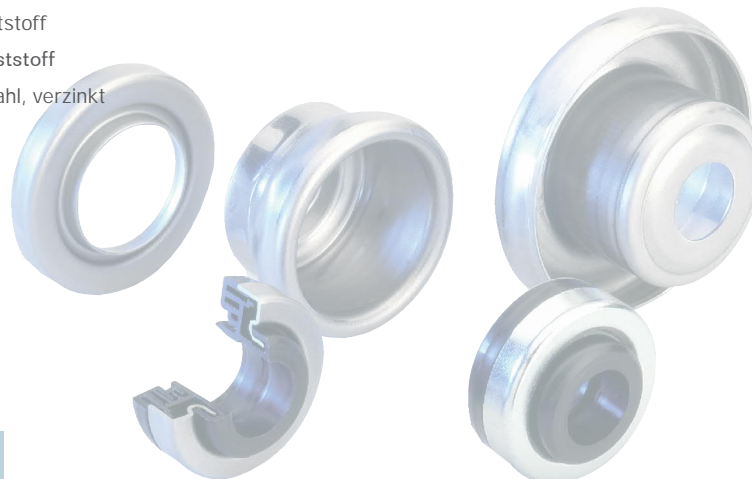
Karton [Stck.]

6204: 500  
6305: 500

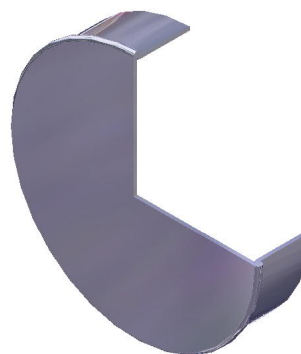
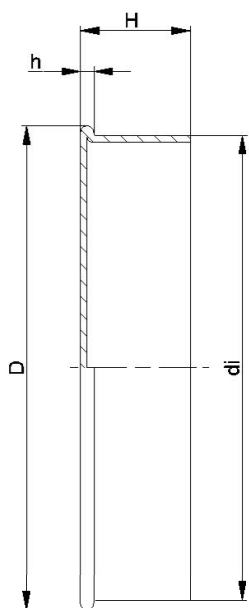
Labyrinth LH-			
Typ	D	H	d
LH-6303	47	22,5	17
LH-6204	47	22,5	20
LH-6305	62	23,5	25
LH-6206	62	23,5	30
LH-6306	72	24,5	30
LH-6308	90	23,1	40

Weitere Varianten auf Anfrage!

- ☛ Dichtkappe: Stahl, verzinkt
- ☛ Regenkappe: Kunststoff
- ☛ Innenlabyrinth: Kunststoff
- ☛ Außenlabyrinth: Kunststoff
- ☛ Fetthaltescheibe: Stahl, verzinkt (nur bei 6204)



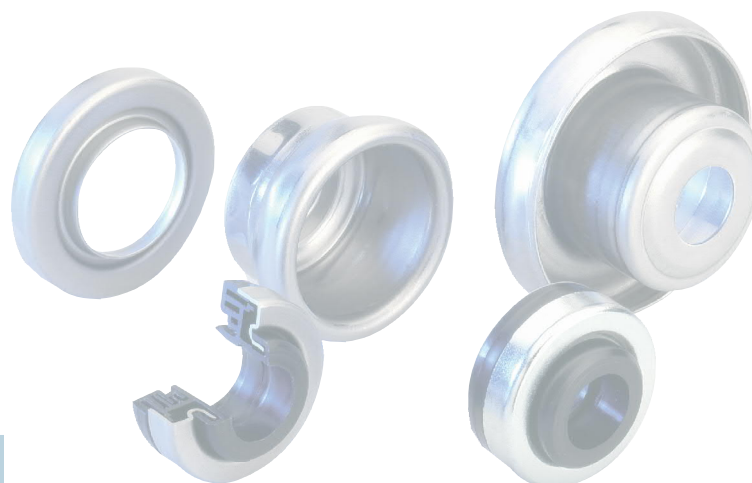
LH/FL



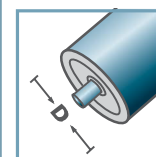
LH- geschlossen				
Typ	D	d <sub>i</sub>	H	h
LH-6204	50	47,4	14,7	1,8

Weitere Varianten auf Anfrage!

🔩 Dichtkappe: Stahl

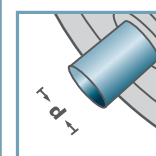


LH-



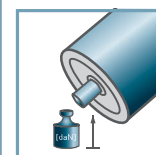
D [mm]

-



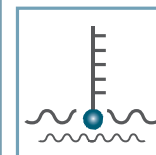
d [mm]

-



C [daN]

-



T [°C]

-



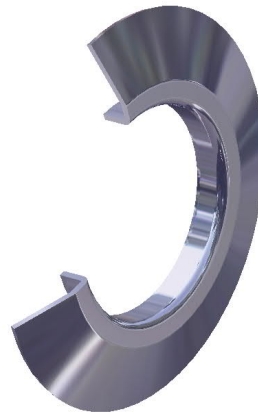
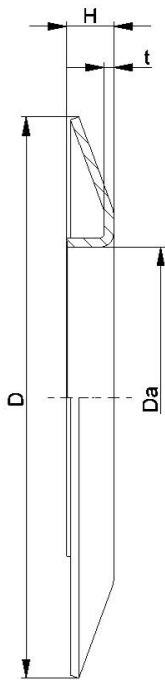
-



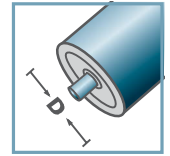
Karton [Stck.]

ST-6204	125
ST-6305	100
ST-6306	100

LH/FL

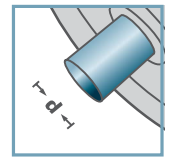


BS-



D [mm]

-



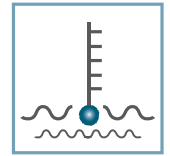
d [mm]

-



C [daN]

-



T [°C]

-



-

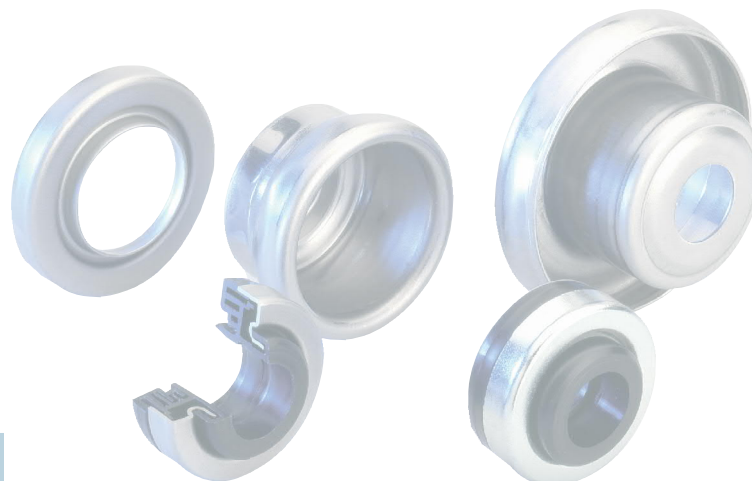


Karton [Stck.]

BS-				
Typ	Da ±0.1	D -2	H ±0.5	t
BS-50-130	49,9	130	10	1,5
BS-60-130	59,9	130	10	1,5
BS-80-150	79,9	150	14	2,5
BS-89-150	88,9	150	14	2,5
BS-108-150	107,9	150	14	2,5

Weitere Varianten auf Anfrage!

☛ Bordscheibe: Stahl



LH/FL