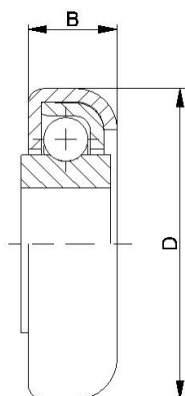


Special bearings



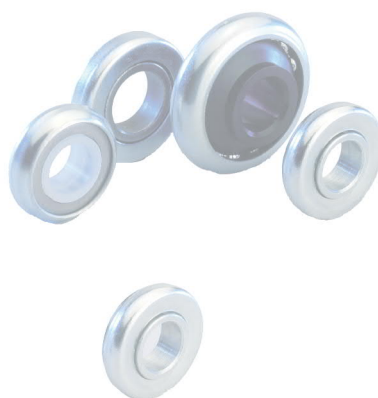
SPECIAL BEARINGS



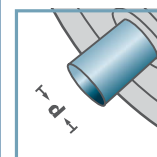
RL-0.280		
Type	D	B
RL-0.280	28,0	7,6

Other dimensions on request!

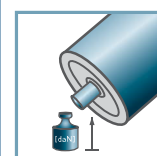
- ☛ Capsule: Steel, Zinc Plated
- ☛ Bearing Shell: Steel
- ☛ Ball: Steel
- ☛ Inner Race
 - ☛ Steel: C=10daN
 - ☛ Plastic: C=7daN: 0° - 80°



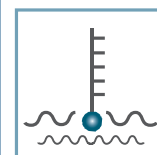
RL-0.280



d [mm]
10; 12; 12,8



C [daN]
7; 10



T [°C]
0° - 80°



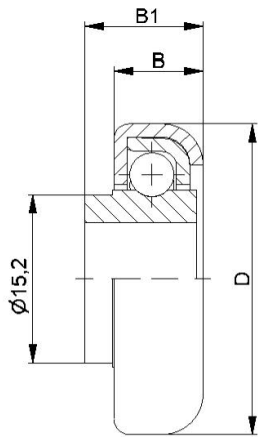
-



Carton [pcs.]

500

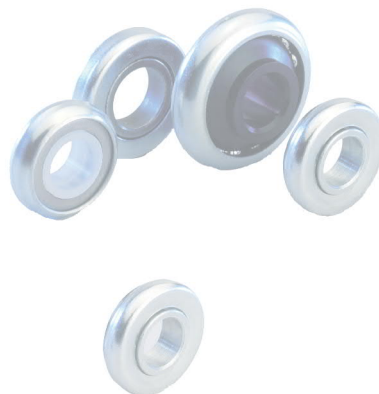
Radial Ball Bearings



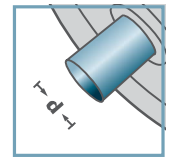
RL-0.280 with collar			
Type	D	B	B1
RL-0.280 m.B.	28,0	7,6	10,0

Other dimensions on request!

- ☛ Capsule: Steel, Zinc Plated
- ☛ Bearing Shell: Steel
- ☛ Ball, Steel
- ☛ Inner Race
 - ☛ Steel: C=10daN
 - ☛ Plastic: C=7daN: 0° - 80°



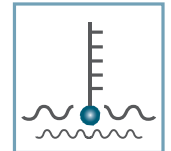
RL-0.280



10; 12



C [daN]
7; 10



T [°C]
0° - 80°



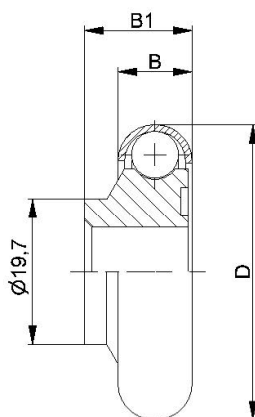
-



Carton [pcs.]

500

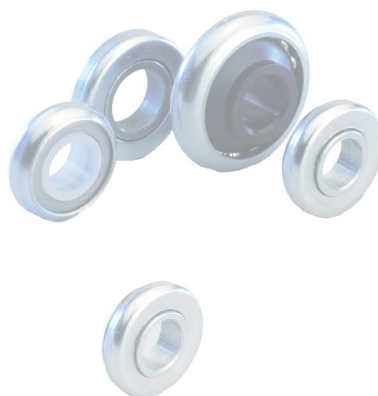
Radial Ball Bearings



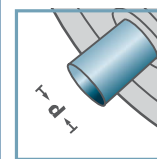
RL-0.400			
Type	D	B	B1
RL-0.400	40,0	10,0	14,5

Other dimensions on request!

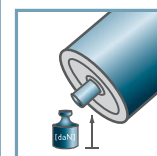
- ☛ Capsule: Steel, Zinc Plated
- ☛ Ball: Steel
- ☛ Inner Race: Plastic



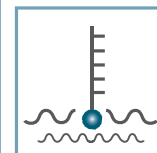
RL-0.400



d [mm]
12



C [daN]
7



T [°C]
0° - 80°



Carton [pcs.]

250

Radial Ball Bearings