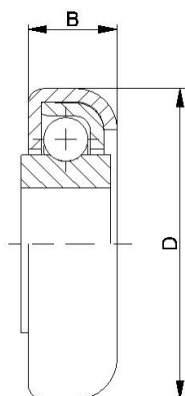


Spezialkugellager



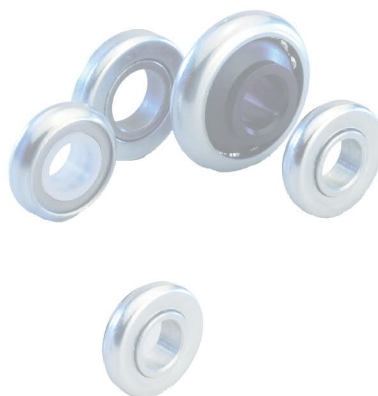
**SPEZIALKUGELLAGER**



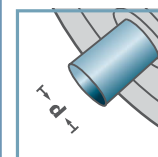
RL-0.280		
Typ	D	B
RL-0.280	28,0	7,6

Weitere Varianten auf Anfrage!

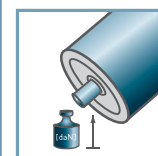
- ☛ Kapsel: Stahl, verzinkt
- ☛ Lagerschale: Stahl
- ☛ Kugel: Stahl
- ☛ Innenring:
  - ☛ Stahl: C=10daN
  - ☛ Kunststoff: C=7daN; 0° - 80°



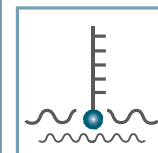
RL-0.280



d [mm]  
10; 12; 12,8



C [daN]  
7; 10



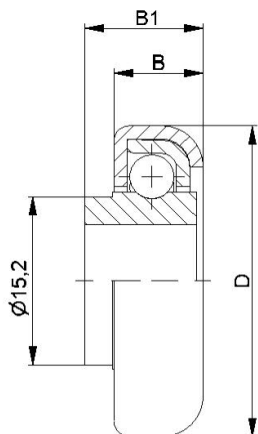
T [°C]  
0° - 80°



Karton [Stck.]

500

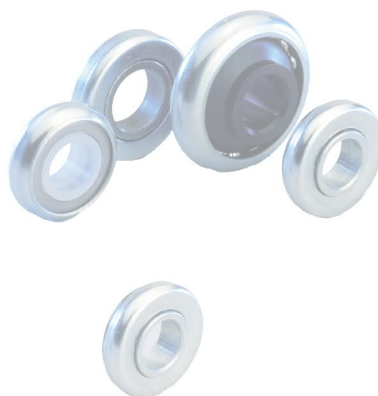
# Ringkugellager



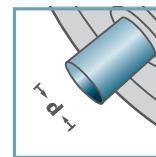
RL-0.280 mit Bund			
Typ	D	B	B1
RL-0.280 m.B.	28,0	7,6	10,0

Weitere Varianten auf Anfrage!

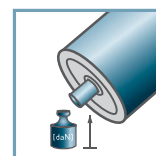
- ☛ Kapsel: Stahl, verzinkt
- ☛ Lagerschale: Stahl
- ☛ Kugel: Stahl
- ☛ Innenring:
  - ☛ Stahl: C=10daN
  - ☛ Kunststoff: C=7daN; 0° - 80°



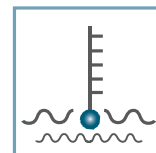
RL-0.280



10; 12



C [daN]  
7; 10



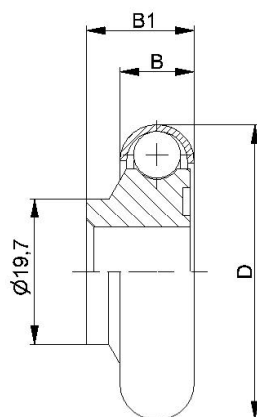
T [°C]  
0° - 80°



Karton [Stck.]

500

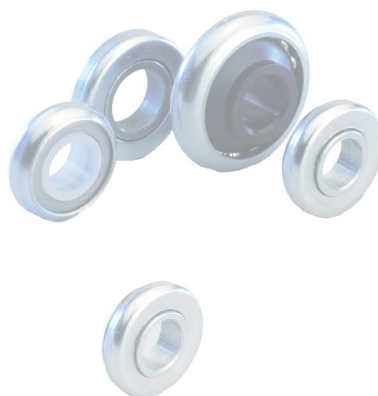
# Ringkugellager



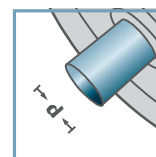
RL-0.400			
Typ	D	B	B1
RL-0.400	40,0	10,0	14,5

Weitere Varianten auf Anfrage!

- ☛ Kapsel: Stahl, verzinkt
- ☛ Kugel: Stahl
- ☛ Innenring: Kunststoff



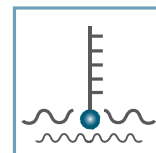
RL-0.400



d [mm]  
12



C [daN]  
7



T [°C]  
0° - 80°



Karton [Stck.]

250

# Ringkugellager